

The Luna Light

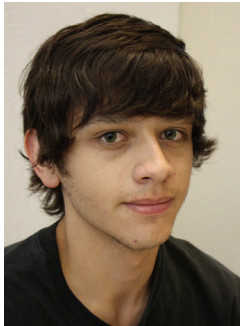


"The People's College"
Becoming The Premier Rural Community College in America

Volume 4 Issue 18

2011 Special Graduation Issue May 14

What does Luna CC mean to our graduates?



Michael Fram
Culinary Arts
Las Vegas

"This program has helped me so much. Chef Adrienne is phenomenal. She is one of the best instructors I have ever had. I learned a lot."



Christina Castillo
Dental Assisting
Las Vegas

"Luna Community College has done a lot for me. It has helped me become a better person. Luna Community College offers a lot of help."



Destiny Torres
Criminal Justice
Albuquerque

"I would not have succeeded if the support wasn't there. Luna Community College gave me a chance to challenge myself."



Rayna Tafoya
Cosmetology
El Ancon

"I enjoyed my studies here at Luna Community College. My instructor Connie Ortiz was wonderful. Coming here was a wonderful opportunity."



Greg Vigil
Video Gaming
Las Vegas

"It's a great school to get a university quality education for half the price. Instructors are available when you need them. I feel prepared to go into a four-year university."

**Great
Job
2011
LCC
Graduates!
You're
The
Best**



Lynne Ostrowsky
Furniture Making
Ocate

"I needed something to do after my husband passed away so I became a full-time student."



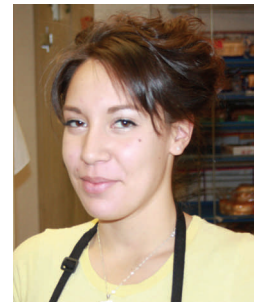
Gary Gamertsfelder
Auto Collision
Albuquerque

"Luna Community College has meant a better future. Luna has helped me become a better person. Look how far I've gone."



Marissa Navarro
Early Childhood
Bernalillo

"People in general were always there to help me, very supportive. Luna Community College gave me a chance to play softball and go to school."



Jessica Aragon
Teacher Education
Albuquerque

"The instructors worked with me a lot and I always appreciated that. Instructors are very involved with their students here."



Congratulations to Luna Community College Springer Satellite graduates. Pictured (l-r) Darline Wiggins, Patricia Kuhlman (instructor) and Lynn Ostrowsky. Not pictured are Kaye Pinkston and Susan Kirby.

Springer Satellite announces four graduates

By Louise Fernandez-Portillos

We are happy to announce that we have four students graduating from the Luna Community College—Springer Satellite this semester:

Susan Kirby, AA Teacher Education Degree; Karla Pinkston, FCMK Certificate; Lynn Ostrowsky, AAS FCMK Vocational Education Degree and Darline Wiggins, FCMK Certificate.

LCC Mora Site making a difference

**By Wanda Martinez
Mora Site Director**

Our collaboration with the Mora Independent School District has been proven to be successful thus far and this year is no exception. The high school students are steadily taking advantage of the courses offered for dual credit/concurrent enrollment. As we say goodbye to the seniors, we have welcomed the incoming juniors with an “orientation” presentation to Luna Community College. They have begun this process by taking the COMPASS exam so they may register for summer courses. They will join the incoming seniors who will also be registering for the Student Academic Advancement Institute this summer.

I would like to say a special goodbye to the class of 2011—one of the “biggest” classes who, collectively, will be leaving high school with the most college credits since I have been with LCC. Many were a few credits shy of a general educa-

tion certificate and, as such, it is with great honor that I offer my congratulations to the following three high school students who will partake in the graduation ceremonies on May 14.

Joshua Garcia-plans to attend the University of New Mexico and major in biology.

Miguel Serna-is going to New Mexico State University and will major in engineering.

Frankie Lee Trujillo-has been accepted to New Mexico Highlands University and will major in social work.

In letters written for this article, they wanted to thank their parents for their support, Mrs. Audra Vigil for her guidance and encouragement, and Wanda for “pushing” them to get where they are right now.

On behalf of the Mora Site, I would like to extend our sincerest CONGRATULATIONS to all the Luna Community College graduates of 2011.



Luna Community College auto collision student Chris Castellano concentrates on his final examination.

Printed schedules for the summer semester are now available.

For more information, please call 505/454-2533.

**LCC:
“The People’s College”**



Contact: Sarah Flores
(505) 454-5367

Sign Up to be a Friend of the Foundation!

Attention all Alumni! Now is your chance to become a friend of the Foundation and help others at Luna Community College! Please fill out the form below and
Mail to: P.O. Box 1926
Las Vegas, NM 87701

Name: _____

Address: _____

E-mail: _____

The Luna Community College Board of Trustees along with the LCC Foundation Chairman Ernesto Salazar (bottom right) and Executive Director Sarah Flores (bottom left) accept a \$270,000 donation from Helen O'Brien. Mr. Lorenzo Martinez, who is also pictured between Flores and Salazar, was there on behalf O'Brien's generous donation. The money will be used as a memorial scholarship fund for the nursing program and will be available in the fall. Pictured bottom row (l-r) are: David Gutierrez, LCC Board Member; Flores, Martinez and Salazar. Top (l-r) Tony Valdez, LCC Board Vice-Chairman, Jerry Maestas, LCC Board Chairman, Danyelle Romero, LCC Student Government President, Abelino Montoya, LCC Board Secretary and Dr. Pete Campos, LCC President.

LCC:
"The People's College"

7th Annual Car Show



Set up time

8am-10am

Categories:

Rod & Custom, Lowrider, 4x4, Import, Motorcycle, Pedal Bike/ Car, Muscle Car, Original, Rat Rod, Unfinished & Best of Show.

\$15 Entry Fee

Entries will be accepted until the day of event

People's Choice Trophies will be awarded one per class

Sponsored by the LCC Trades Dept.

Co-sponsored by LCC Student Activities Office, LCC Student Government and LCC **skillsUSA** Members.

Saturday, June 11, 2011
10am-3pm
on the LCC Campus

For information please contact:

Anthony Baca 505-454-2591 or 505-429-0425

Gene Sandoval 505-454-2590

Gilbert "Guba" Martinez 505-454-2591



LCC's Phi Theta Kappa Organization continues to be regarded as exceptional



Several Luna Community College students were inducted into the 2011 Spring Phi Theta Kappa Beta Mu Nu Chapter. Front row (l-r) are: Shannon Krause, Erome Bradford, Michael Alane Chambers, Tayler Atencio, Angelique Arguello, Charlene John, Esperanza Medina, Elizabeth Montano, Ashley Olivas and Chapter Secretary Jennifer Muniz. Middle row (l-r) are: Jordan Lopez, Laura Brewer, Gene Gonzales, Carlos Arreguin, Matthew Lopez, Marcos Romero, Larissa Romero and Michael Valois. Back row (l-r) are: Chapter President Destiny Torres, Kathryn Regensberg, Christopher Kelly, Amadeus Boydston and Frederick Romero. Not pictured are Chapter Vice President Ashley Hensley, Jaron Dorchinez, Danica Gonzales, Ruby Maestas, Chapter Advisors Cindy Armijo and Dr. Twila Quintana.

The following is an interview with Luna Community College's Phi Theta Kappa Advisors Cindy Armijo and Dr. Twila Quintana.

What is the main ingredient which sustains the LCC Phi Theta Kappa success level?

LCC's Phi Theta Kappa Beta Mu Nu Chapter was chartered in 2003; since that time, approximately 350 students have accepted membership. Over the past eight years, the one constant that has sustained the Chapter's success level has been the Chapter's advisors, specifically the Contact Advisor Cindy Armijo, and the high standards and goals the advisors have set for the Beta Mu Nu Chapter.

Additionally, the Beta Mu Nu Chapter has benefited from a small number of LCC students who have participated, beyond just accepting membership, by filling officer leadership roles at the chapter and regional levels. The commitment of these members, coupled with their willingness to accept mentorship, has resulted in our continued success.

How would you rate Luna Community College's chapter to other colleges across the state, nation?

LCC's Beta Mu Nu Chapter is the pre-eminent leader amongst the 19 chapters within the New Mexico Region. This distinction is not only in the area of Hallmark Rec-

ognition, which Beta Mu Nu has swept for the last five years including Distinguished Chapter, Honors in Action, College Project, Scholarship Hallmark, Leadership Hallmark and Service Hallmark, but also in Phi Theta Kappa programming including Five Star Chapter through Five Star Chapter Development Plan, Pinnacle, College Fish and Competitive Edge. Furthermore, our Contact Advisor Cindy Armijo serves as the Regional Coordinator for the New Mexico Region. Of the 29 regions, Armijo is the only Regional Coordinator who serves as her chapter's contact advisor.

Continued on next page

LCC Phi Theta Kappa...

Continued from page 4

Internationally, our Beta Mu Nu Chapter has maintained steady, upward progress. As a first for any community college in the New Mexico Region, Beta Mu Nu was one of four chapters recognized at the 93rd Annual International Convention as achieving the Beta Alpha Continued Excellence Award. This award is given to chapters who have been named Internationally Distinguished Chapters for three consecutive years. Last year, Beta Mu Nu was named Fourth Most Distinguished Chapter out of approximately 1,300 chapters.

This type of recognition exemplifies the caliber of students LCC produces. It also further demonstrates the ability of our Beta Mu Nu Chapter members to set goals and achieve and often surpass those goals.

With all the state, national and international accolades where does the LCC Phi Theta Kappa chapter go from here?

Of course we are always striving to improve our standing in a multitude of areas. The difficulty we face is two-fold: 1. The higher the level of recognition we achieve, the more difficult it is to maintain that level; and 2. The very nature of community colleges means students are only with us for a short period of time before they graduate and hopefully continue their educations at a four year university or college.

Our students excel in Phi Theta Kappa, where would you put them on the national, international level?

As we have personally experienced, our LCC students can successfully compete against honor students at all levels. If a student is dedicated and committed to upward academic and personal growth, the possibilities, along with the opportunities, are limitless.

What motivates you and Dr. Twila Quintana (advisors) on a year-in year-out basis to continue striving to be the best?

As advisors, our greatest motivation is to inspire and witness the transformation of our students/chapter members into scholar-servant-leaders whose actions are characterized by the impact and implications they have upon their communities, reaching out to stretch across the world. We realize the long-term benefits participation in Phi Theta Kappa can bring to our students and want to expose as many members as possible to these potentially life-changing options. Moreover, it doesn't hurt that we are both very competitive individuals.



Luna Community College students Amadeus Boydston and Erome Bradford pass the light of knowledge during an induction ceremony last week.

How many students are involved in the LCC Phi Theta Kappa?

Each academic year the Beta Mu Nu Chapter holds two induction ceremonies, during the fall and spring semesters. Out of approximately 200 invitations to accept membership into the honor society, 10 to 12 percent or 20 to 25 students accept membership each semester. On our campus there are usually 75 chapter members. At the chapter level, there are currently less than a handful of active members.

Would you like to see more students participate in the LCC Phi Theta Kappa? If so, what does the college need to do?

Knowing all the potential opportunities available to Phi Theta Kappa members, we both say an unequivocal **YES** to more student participation. Phi Theta Kappa membership is the golden key that unlocks a

multitude of doors. As advisors, we are both available to discuss Phi Theta Kappa membership with any prospective student. If you have received an invitation letter (by completing 12 credit hours with a 3.5 cumulative grade point average or greater) and did not accept membership we would like to talk to you as to why you did not accept the invitation.

After a recent induction ceremony Dr. Pete Campos mentioned how great it would be to have all LCC students become Phi Theta Kappa members. While that may be an unattainable goal, we all recognize how important setting a goal is in order to determine a course of action. As a campus community it is up to ALL faculty, staff and administrators to push our students to achieve. Phi Theta Kappa membership and participation can be more than mere recognition for academic excellence; it can be used as a tool to take our students farther than they ever imagined by truly opening up a world of possibilities.

For more information about Phi Theta Kappa, please contact Cindy Armijo at 505 454-2558 or carmijo@luna.edu, Dr. Twila Quintana at tquintana@luna.edu or the Phi Theta Kappa website at www.ptk.org.

Gillie Lopez critical in building West Las Vegas athletics

By Henry Sanchez

This is the seventh of a series of articles written on old-school athletics by Luna Community College sports performance instructor Henry Sanchez.

Gilbert "Gillie" Lopez was born on Jan. 11, 1922 and passed away on May 18, 2005. In the 83 years he lived on this earth, he left a mark that his family can be proud of. We will attempt to look at his life and recall some of the things that made the man.

In doing the research for this article his son Danny said: "It's nice to see something is being written about my dad. He never told us about his accomplishments and his grandchildren never really knew since he really didn't brag."

Lopez graduated from Wagon Mound High in 1940, excelling in every sport that was offered at the school. A publication in The Southwest Wind in 1940 stated: "It is rumored that Wagon Mound sports fans shed actual tears when their idol Gilbert Lopez graduated from high school and accepted an athletic scholarship to attend New Mexico Normal University, which in 1941 adopted the name New Mexico Highlands University. At that time Lopez was 5-4 and weighed 135 pounds.

As we looked at his history at New Mexico Highlands, we learned he had lettered in football, basketball, track, baseball and boxing (five sports which is totally unheard in today's sports world).

In 1940, he won The Golden Gloves championship in the bantam weight class for the state and continued on to win the regional Golden Gloves crown, earning a spot in the national tournament which was cancelled because of the turmoil of World War II (who knows what could have happened, maybe a trip to fight in the Olympics?).

There are stories or legendary tales about Gillie's career at NMHU, such as in 1941 when he played in a football game against Western Teachers College in Silver City (today, we know this school as Western New Mexico University), then he headed for Tucson to box and win the Southwestern Bantam Weight



Gilbert "Gillie" Lopez

Championship in the Golden Gloves.

He was famous for being the spark plug for Coach Stu Clark's basketball teams. In fact, it was often written that he was the smallest and fastest player in The New Mexico Basketball League.

The president of NMHU Dr. John Aragon was often quoted as saying "Gillie Lopez was the best pound-for-pound athlete to have ever played for NMHU."

He loved to coach basketball and was very successful winning several district championships. Even though they did not have a gym. I remember Lopez saying that they had never lost a home game in basketball which was true since they did not have a home gym. It was so appropriate when in 1991 the new gym built was named in honor of Gillie Lopez.

He was well rounded in all sports and at West Las Vegas coached football, basketball and baseball at the varsity levels.

In 1963, the president of the United States Lyndon B. Johnson appointed Lopez as an ambassador for coaching in Columbia. In

1980, he was offered a chance to coach the Argentina Olympic Basketball Team but had to decline because of health issues.

In 2005, the prestigious Stu Clark Basketball Tournament was dedicated in his honor. In the same year, he was inducted into the New Mexico Highlands Athletic Hall of Honor, where he took his place with the greatest athletes in his school's history.

In his long career with the West Las Vegas School System he worked in administration of athletic activities, special services and when he retired in 1981 was the transportation director for the district.

He was always active in political activities for the county, city and state democratic party, a member in the Central State Committees for the party and attended National Democratic Conventions.

From 1960 to 1966, Lopez was a member of the New Mexico Higher Education Board. He was also elected and served as a member of the New Mexico Board of Education.

He earned his BA and MA degrees from NMHU and had been able, while in the military, to study at Lee University in Lexington, Va.. During the World War II years, he served his country in the Air Force, being a member of the transportation command, stationed at Camp Luna in Las Vegas and Nicholas Field in the Philippines. During this time, Lopez played basketball on the air-command Team which had players from all over the country and were considered a great team.

In 1947, Lopez was hired by the Town Jr. High in Las Vegas as a coach and physical education instructor. The school had all-male instructors and students who attended up until the 10th grade (The Christian Brothers were still connected with the school and the student body at Town High was 67 students in the ninth and 10th grades).

Continued on page 7

Gillie Lopez ...

Continued from page 6

Here are a few other bullets on the school:

- In 1948, the school went co-ed in both the faculty and student body.
- In 1949, the school became a full fledged high school with grades 9-12.
- In the 1950-51 school year Town High graduated its first class with 20 students and went back to having 9th and 10th grades the following year (11th and 12th graders enrolled and graduated from Immaculate Conception or Robertson High).
- In 1954, the voters of the town of Las Vegas approved a bond issue for a building to house junior high students which would later on become the high school.
- In 1955, the state legislature created the West Las Vegas High School.

Lopez was the first coach hired at West Las Vegas and was eager and ready to take on this great challenge. He went back to his old

friend and college coach Stu Clark who sold him the old Highlands High School uniforms for \$1. The uniforms were green and gold. Lopez liked the name Dons because it was a Spanish term and it would help the budget with only a few letters to be sewn on the uniforms. So in short, that is how the West Las Vegas Dons and colors came to be born.

Gillie was married for 55 years to Rosalie Bustamante from Pecos and they were the proud parents of four children.

- Dr. Michael Lopez (West Las Vegas class of 1970) who graduated and played Division I football for Notre Dame University. He earned his medical degree from Stanford University and practiced medicine in Las Vegas. He and his wife Ginny have five children.
- Danny Lopez (West Las Vegas class of 1972) played football and graduated from Georgetown University, a Division I school. He is still considered one of the best running backs in the

history of Georgetown football. He had a very successful career with the New Mexico Department of Public Safety and retired in 2003. Today he stays busy working on his ranch. He and his wife Lisa have three children.

- Gillie Lopez (West Las Vegas Class of 1976), the second youngest of his children. He died in the early summer of 1979 after a motor cycle accident. He was 20 years of age, had attended the University of Southern California at Santa Barbara and had transferred to NMHU.
- Amaila Black (West Las Vegas class of 1981) attended and graduated from Notre Dame with a degree in aerospace engineering. Today, she works for Sandia Labs. Amalia and her husband Steve and live in Albuquerque.

Gillie Lopez, the father, educator, administrator and the coach lived a rich and full life in all aspects and the things he created and cultivated still live on today.

Luna: The College for a good education

By Dr. Pete Campos

The road to a good career or a career change begins at Luna Community College. While LCC offers a strong concurrent enrollment program for junior and senior high school students and core classes that serve as the base that eventually leads to a post secondary degree – we provide much more! For example: our academic and vocational programs are rigorous and if a student asks for help they will receive tutoring. Personal stories shared with me by students who are graduating this year are primarily based on their time at LCC and that it was well spent. These individuals have generally said, the work was hard but they were given extra help when they asked for it.

A couple of student success stories prove the point that Luna is the college for a good education. One student completing her studies in culinary arts has earned a scholarship and has the opportunity to move on to a four year university and pursue her goal to learn more about food science and eventually find a good paying job in



LCC student Kenneth Ulibarri gives President Campos a hair cut.

that field. Another student has become a perfectionist at hair cutting and styling; while he has devoted his time to becoming the best he can be at his chosen craft – he is now looking into advanced education to broaden his scope of learning. Who knows where the hopes, dreams and hard work will take these two and the numerous other Luna graduates? Our graduates are the only ones who can place limitations on their potential!

I wholeheartedly believe these Luna graduates will become the ultra professionals and community leaders who will positively contribute to the towns and cities in which they choose to live. *Luna graduates; hang your degrees in places of distinction – you've earned them and people should know your education and training came from a reputable college.*

LCC:

“The People’s College”



Title V Newsletter

Luna Community College's Title V Mission:

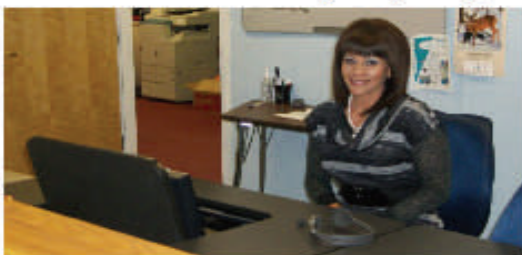
"Developing a comprehensive online learning network for rural, time and place-bound students."

APRIL 2011

VOLUME 4 ISSUE 5

Nursing Online Tutor Specialist has Arrived

Michelle Trujillo has officially been hired as the Luna Community College Title V Nursing Online Tutor Specialist. Michelle brings 12 years of experience to Luna Community College in the medical field. Her first day was April 18 and she will help tutor nursing students with their online classes. Michelle is a registered nurse and has her Bachelor of Science in Nursing and also has her LPN license. She will be a great addition to the college and will be a tremendous help to the students. Welcome to the Luna Community College family, Michelle.



Michelle Trujillo, Nursing Online Tutor Specialist

Mora Smart Lab Under Construction

The Mora Title V Smart Lab is almost complete and ready to be used by the students who are taking online classes. There are 18 computers, workstations, a Smart Board and a printer/scanner that students will be able to use. Rick Roybal, Title V distance education technician, John Tieman, online student services developer, Norman Sena, Luna Community College's electrician and Mannel Archuleta, technical maintenance, have been working at the Mora satellite in running cable in the ceiling, preparing, moving furniture, and getting the T-1 lines situated in the server room for optimal use by students. Thank you to Rick, John, Norman and Manuel.



Mora Student Smart Lab under construction

IMT Member to Retire



Eloy Garcia, a member of the Title V Internal Monitoring Team, will be retiring June 30 from Luna Community College. Eloy has been very instrumental in supporting Distance Learning Services as the Director of Humanities. His expertise and dedication to the Title V initiatives are truly appreciated by the Title V staff. We will miss Eloy's insight, experience and lightheartedness. Good luck to you Mr. "G".

Title V Staff
Lorraine Martinez, Project Director
Michelle Bencomo, Administrative Assistant
Larry Paiz, Instructional Designer
John Tieman, Online Student Services Developer
Rick Roybal, Distance Education Technician



Point-To-Ponder
"Destiny is not a matter of chance; it is a matter of choice. It is not a thing to be waited for; it is a thing to be achieved."
~ William Jennings Bryan ~

L
U
N
A

C
C:

"The People's College"

Luna CC: "The People's College"

General agriculture – online degree!

By Gary Martinez

Academic Director for Vocational and Trades

LCC will offer the Associate of Applied Science degree in General Agriculture as one of three on-line programs. The purpose of the degree is to introduce students into the field of agriculture with a two-prong approach.

The first is to help students build academic skills in preparation for university work. It is the intent of the program to assist the students in skill building through 33 credit hours of General Education CORE requirements. Students are required to complete nine credit hours in communications, including Freshman Comp I and II, intermediate algebra, computer fundamentals, and 20 credit hours in either – Laboratory Sciences, Social and Behavioral Science or Humanities and Fine Arts. The goal is to help students with a well rounded education and the abilities to communicate, write, solve problems, adapt to new situations, analyze information and interact with diverse people.

The second approach is to assist students for employment opportunities within the agriculture industry. Students pursuing the degree are required 16 credit hours in general agriculture, with a focus in agriculture economics, business, and management. The program capstone includes a research methods project and an internship. Furthermore, students have a variety of electives to choose from, including course work in equine (horse science), aquaculture, biology and horticulture.

General Education Core (33 hours)

Area I. Communications (9 hours)

ENG111	Freshman Composition I	3
ENG115	Freshman Composition II	3
SPCH111	Public Speaking -or-	3
SPCH112	Interpersonal Communication	3

Area II. Mathematics (4 hours)

MATH116	Intermediate Algebra	4
---------	----------------------	---

Area III. Laboratory Science -or-

Area IV. Social and Behavioral Sciences -or-

Area V. Humanities and Fine Arts (20 hours)

Program Requirements (16 hours)

AG105	Introduction to Animal Science	3
AG110	Introduction to Agriculture	
	Economics & Business	3
AG205	Agriculture Management Principles	3
AG250	Agriculture Internship	4
AG260	Research Methods in General Agriculture	3

Related Studies (3 hours)

CSA150	Computer Fundamentals	3
--------	-----------------------	---

Approved Electives (9 hours)

AG115	Introduction to Aquaculture	4
BIO127	General Botany	4
BIO142	General Zoology	4
EQU105	Equine Behavioral Practices	3
EQU120	Equine Health and Nutrition	3
EQU140	Equine Anatomy and Physiology I	4
EQU145	Equine Anatomy and Physiology II	4
EQU210	Equine Genetics	3
EQU250	Equine Business Management	3
HRTC105	Garden Maintenance and Design	3
HRTC122	Plant Propagation	3
HRTC131	Soil Management	3
SMET101	Introduction to Science, Math & Engineering Tech	3

LUNA COMMUNITY COLLEGE IS ACCEPTING APPLICATIONS FOR THE FOLLOWING VACANT JOB POSITIONS:

- Adjunct Faculty-CDL Behind the Wheel Instructor
- Adjunct Faculty/Per Course Instructor
- Director-Allied Health Sciences
- Full-Time Faculty- Dental Assisting Instructor

- Full-Time Faculty- English/Literature Instructor
- Full-Time Faculty- Medical Surgical Nursing Instructor
- Temporary Part-Time Administrative Assistant-Springer Satellite
- Temporary Part-Time Office Specialist/Library Assistant-Mora Satellite
- Temporary Part-Time Custodian-Mora Satellite

FOR JOB DESCRIPTION(S) AND/OR CLOSING DATES, CONTACT THE HUMAN RESOURCES DEPARTMENT AT (505) 454-2503 OR VISIT OUR WEBSITE AT WWW.LUNA.EDU

LUNA COMMUNITY COLLEGE IS AN EQUAL OPPORTUNITY EMPLOYER. ALL POSITION POSTING FOLLOW THE LCC AFFIRMATIVE ACTION PLAN.



Luna Community College SkillsUSA competitors and their advisors will be going to Kansas City on June 19. Left photo (l-r) LCC Advisor and SkillsUSA State Board Member Anthony Baca, Earl Barela, Gary Gamertsfelder, LCC Skills Advisor Gilbert "Guba" Martinez, Jaime Ulibarri and Lawrence Gomez. Right photo (l-r) LCC Advisor Connie Ortiz, Marcia Garcia, Victoria Perea, Roxanne Garcia and Crystal Rae Martinez. Both groups are raising money for the national competition.

LCC: Why we are unique

By Marcella Cannone

Luna Community College is unique in many facets. Administrators, staff and faculty have introduced standards and quality of education that thousands of students have come to know and appreciate.

Luna started as a vocational institute known as Luna Vocational Technical Institute with unique programs in industry and trades. As Luna developed these unique programs, the college added new buildings to accommodate the influx of a rising student enrollment. Luna has kept up with advances in technologies and structural classroom techniques; however LCC still offers many of its original programs such as welding, carpentry, auto machine and other vocational programs geared to give students opportunities for fair and decent employment.

Since its beginning, Luna's different ad-

ministrations, with the addition of new faculty, and new staff, as well as, the changing student population have added new buildings and programs to fit the needs of the students and the community. As time passed, Luna went from a vocational institute to a community college now offering associates degrees (associate of arts and associate of science degrees). The college also continues to offer certificate programs.

Luna Community College's AA, AS programs are designed for transfer to in-state four year institutions. There are several students who take advantage of the opportunity. They pursue education that is taught at LCC and carried over into a career field they will eventually retire from. LCC students are given many opportunities to advance in their educational careers.

Recently, Luna Community College added programs in dual credit, mass media communications, distance learning, and early childhood education programs, as well as many others. LCC is continuing to develop many programs and adding classes as the student population increases. Many of our graduates have gone on to receive a bachelor's or master's degree.

As time goes by everyone leaves something unique: buildings, a name change to the school, a baseball team and I will remember these administrators for no furloughs or pay cuts (thank you). Without dedicated administrators, faculty, and staff, plus without students Luna Community College would only be an empty building on the hill overlooking Las Vegas.

LCC:

"The People's College"

Online military studies degree

By Debbie Trujillo
LCC Education Director

Online Associate of Science in Military Studies is now available! After seeking and receiving approval from the Higher Learning Commission, Luna Community College is now ready to offer a complete online degree in Military Studies.

The program is currently serving active military members from the New Mexico National Guard. Although not exclusive to active guard members the program helps those soldiers who do not currently possess a higher education degree the opportunity to do so in a field directly related to their profession. Additionally, soldiers who do obtain a degree improve their knowledge and application of leadership skills and usually improve their rank as a result of program completion. In addition to participation in program coursework Luna Community College will waive nine elective credit hours for documented successful completion of basic training.

Online courses utilize a platform delivery model to allow soldiers to learn in an asynchronous environment that is conducive to their professional and family obligations while pursuing personal education goals.

LCC:
**“The People’s
College”**



REGISTER APRIL 26

. FS115 Introduction to Firefighting
MTWR 10:00AM-12:30PM

. FS145 Vehicle Extrication
TR 1:30PM-4:30PM

**For more information contact Lorenzo Montoya at
505-426-5363**



**DO YOU ENJOY WORKING OUTSIDE?
HOW ABOUT HELPING PEOPLE?**

GIVE FIREFIGHTING A TRY!

JOIN THE FIRE SCIENCE PROGRAM

**SUMMER CLASSES STARTING
06/06/2011**

LCC may be a good educational start for you

By Eloy Garcia
Humanities Director

Are you starting your college studies at one of New Mexico’s community colleges or technical-vocational institutes? Are you planning to transfer to a university to complete a bachelor’s degree? - - **TRANSFER COURSES WITHOUT LOSS OF CREDIT!**

By selecting college courses carefully, a student can guarantee that his/her courses will transfer to any of New Mexico’s publically-supported universities. Moreover, these courses will apply toward bachelor’s degree requirements in most fields of study.

The New Mexico Higher Education Commission and the state’s universities and colleges have developed agreements that will assist a student in transferring without loss of credit. Additional information is available from college advisors. If a student selects a course or courses carefully and completes the course or courses successfully, a student can transfer without loss of credit and can complete a bachelor’s degree without unnecessary delay.

As a student enrolls for the first year of study, he or she is advised to select courses that included in the New Mexico’s Common Core of General Education. The core has been agreed upon by all of the state’s colleges and universities. Courses in the Common Core of General Education are guaranteed to transfer toward bachelor’s degree requirements in most fields of student. Other courses may not.

New Mexico’s colleges and universities have defined a series of two-year Transfer Modules of course work in fields of study such as business, engineering, biological sciences, teacher education, physical sciences, social/behavioral sciences, computer science, humanities and fine arts, and early-child education. The Common Core of General Education is the base of most of these modules and is, therefore, a good starting point for students who have not yet selected a major field for their degree.

Continued on page 12

A good educational start...

Continued from page 11

Students planning to major in one of these fields should follow the state-defined transfer modules developed for those fields in order to assure course transfer.

NEW MEXICO'S COMMON CORE OF GENERAL EDUCATION

Area 1: Communications

Select 9 semester hours from the following:
*College Level English Composition - 3-4 hours

*College Level Writing – 3 hours

*Oral Communication – 3 hours

Area 2: Mathematics

Select 3 semester hours from the following:

*College Algebra – 3 hours

*Calculus – 3 hours

*Other College-Level Math - 3 hours

Area 3: Laboratory Science

Select 8 semester hours from the following:

*General Biology w/lab – 4-8 hours

*General Chemistry w/lab – 4-8 hours

*General Physics w/lab – 4-8 hours

*Geology/Earth Science w/lab – 4-8 hours

*Astronomy w/lab – 4-8 hours

Area 4: Social/Behavioral Science

Select 6 or 9 semester hours:

*Economics – 3 hours

*Intro. Political Science – 3 hours

*Intro. Psychology – 3 hours

*Intro. Sociology – 3 hours

*Intro. Anthropology – 3 hours

Area 5: Humanities and Fine Arts

Select 6 or 9 semester hours:

*Intro. History Survey – 3 hours

*Intro. Philosophy – 3 hours

*Introductory Course in History, Theory, or Aesthetics of the Arts or Literature – 3 hours.



Congratulations goes out to Luna Community College's Softball Team. They won a school-record 20 games this season.

SCHOLARSHIP APPLICATIONS NOW AVAILABLE!

THE OFFICE OF STUDENT FINANCIAL ASSISTANCE AT LUNA COMMUNITY COLLEGE IS NOW ACCEPTING APPLICATIONS FOR THE **ROADRUNNER AND HORIZON SCHOLARSHIPS** FOR THE 2011-2012 SCHOOL YEAR.

STOP BY THE LCC OFFICE OF STUDENT FINANCIAL ASSISTANCE FOR AN APPLICATION AND ELIGIBILITY CRITERIA.

APPLICATION DEADLINE IS
JUNE 1, 2011

Be friends of the Luna Foundation

Dear Friends of the Foundation:

My name is Sarah Flores. I am the executive director of the Luna Community College Foundation. I am dedicated to raising money for scholarships to assist LCC students pay for their education. This past spring we awarded 15 students over \$5,000 in scholarships. I plan to fundraise and solicit more funds to keep the Foundation Scholarship a success.

We have already succeeded this year by receiving a generous donation of a little over \$270,000. A beautiful woman by the name of Helen E. O'Brien has left the Foundation this generous gift to award scholarships for students that are interested in the field of nursing. Ms. O'Brien was a nurse herself, practicing in northern New Mexico. In 1963 she opened the first public health office, which was located on New Mexico Ave. and is now the office of the district attorney. She also was honored as a nursing legend by the New Mexico Nursing Excellence Award for her contributions to the community, the state, and the nursing profession. We will honor Ms. O'Brien's memorial by making sure that these nursing students get the financial assistance that they need. This scholarship will be available in the fall.

Another project we are working on is our Annual Scholarship Golf tournament. It will take place on August 27 at the Pendaries Golf Course. We are currently working on organizing our successful event

that raised over \$50,000 to match the Title V endowment for scholarships at LCC.

Now that others have given to this beautiful institution, it is time for us to give as well. Today, I am asking that all Luna employees contribute to the success of our institution and help be a part of providing scholarships to our students as well. I hope that you can join me by contributing money to the Foundation every pay period. I want to THANK all the employees that already contribute and have been a part of awarding students scholarships every semester. It is because of you that Luna Community College is a success and because of you that many people

have succeeded in life. You have made a difference every semester by your contributions to the Foundation. I will pledge \$20 a pay period and know that my reward will be every May watching a graduate walk down and receive their diploma!

I hope you can join me and pledge whatever you can as "Friends of the Foundation!"

Sincerely,
Sarah Flores
Foundation Executive Director

The LCC Foundation is asking Luna Community College Employees to donate \$20 from your paycheck to help raise money for scholarships. If you contribute \$20 you will automatically be entered into a drawing to win a 22 inch Emerson Flat Screen LCD TV! Call Sarah Flores at ext. 1019 to sign up! Drawing will be held Friday July 1st!



Luna Community College students wait in line for food at a recent barbecue at the Rough Rider Grill.

The Luna Community College Summer Class Schedule is available to view online at www.luna.edu.

LCC offering summer programs for high school students, graduating seniors



Pictured are some of the students who participated in the summer special programs for high school students in 2010. Left photo (l-r) Matthew Cartee, Daniel Gallegos, Jovanna Archuleta, Tyler Pina, Amanda Sanchez, Leroy Tenorio, Nathan Leyba, Charlie Gallegos and Justin Bustos. Right photo (l-r) Kaitland Hutchinson, Esperanza Medina, Isaac Hidalgo and Louis Jencka.

Luna Community College is offering two enhanced college credit summer programs for high school students and 2011 graduating seniors. The first is a Student Academic Advancement Institute (SAAI) which is available to high school students who will be classified as a junior or senior next school year. The second is a Future Leaders Program (formerly known as the Tech Prep Summer Program) which is available to high school students who will be classified as a junior or senior next school year and also for students who will be 2011 graduating seniors. This program will be offered under the Department of Science, Math & Engineering Technology.

Both programs will run from Monday, June 6 to Friday, July 29.

The programs will provide free tuition for up to eight credit hours, books and fees. Students will also receive a \$100 stipend upon successful completion of their courses with a grade of "C" or better.

Both programs are designed to enhance educational opportunities and help students achieve academic success and support their educational goals. Along with course enrollment, students will participate in academic advancement, leadership and college success seminars and other extracurricular activities.

Other advantages are that students are:

- introduced to a college environment
- encouraged to pursue a college degree, either a two- year, four-year or beyond
- form a pathway between their current school, LCC and to a four-year institution.
- awarded an opportunity to challenge themselves to grow both academically as well as personally.
- earn college credit while still in high school.

The SAAI program has 200 slots available. The Future Leaders Program has 50 slots available. Both will be filled on a first-come, first-serve basis. All LCC entrance requirements apply to both summer programs.

Students in the SAAI Program can take classes in the education, vocational, business, health, humanities, science, math and engineering and media arts and sports performance departments. Students can view the LCC Summer Schedule for classes. General education core classes transfer to four-year universities.

Students in the Future Leaders Program can take the following classes (pre-requisites apply): Introduction to Physics, Biology for Non-Majors, Introduction to Computer Science, College Alge-

bra, Engineering Graphics & Basic AutoCAD, Plane Surveying, Introduction to Renewable Energy, Game Analysis & Critique, Introduction to Robotics, American National Government (DL), Beginning Spanish I, Beginning Spanish II, Freshman Composition I, Freshman Composition II, History of New Mexico, Introduction to Anthropology, Introduction to Art, Introduction to Creative Writing/Fiction, Introduction to Drawing, Introduction to Philosophy (DL), Introduction to Psychology (DL), Introduction to Psychology, Introduction to Sociology (DL), Public Speaking, Western Civilization I, Computer Fundamentals, Microsoft Access, Introduction to Video and Game Development.

Applications are available at the high school counseling offices and at the LCC Concurrent/ Dual Credit Office located in the Technology Building, Room 144. For further information and applications, call 454-5377 or 1-800-588-7232 ext. 1075, 454-5374 or 1800-588-7232 ext. 1076 or 505-429-0508. Registration is ongoing through June 10.

Academic and career counseling services will be available along with tutoring services. This is the 23rd consecutive year LCC has had outstanding summer programs for summer high school students.



LCC Building Technology students Anthony Martinez, Ralph Gallegos and Peter Olivas start laying concrete slab on a teaching module at the LCC Building Trades Facility. (Photo at right) Building technology student Nathaniel Montoya starts the finishing process on a slab at a teaching module. For more information on building technology, call Joseph Montoya at 505/454-2586.



Beta Mu Nu Chapter representatives attended the 93rd Phi Theta Kappa International Convention in Seattle from April 7-10. The Chapter received International recognition for the fifth consecutive year.

This year, the chapter received the Distinguished College Project Award and the Beta Alpha Continued Excellence Award. Chapter Advisor Cindy Armijo was recognized by receiving the Continued Excellence Award for advisors. Pictured holding their awards are Chapter Officers Ashley Hensley, Destiny Torres and Advisors Dr. Twila Quintana and Cindy Armijo.

Amanda Sanchez, Carmen Briones and E.J. Sanchez were three of several Luna Community College students that participated in the LCC Clean-Up Day sponsored by Phi Theta Kappa.



LCC:
 “The People’s College”

Are you interested
in earning your degree
on-line?
If YES, Luna Community College
can meet your EDUCATIONAL
GOALS.

NEW AT LCC!

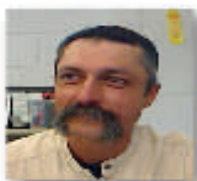
We are offering the
following degrees on-line:

MILITARY STUDIES — Associate of Applied Science Degree

For Further Information Contact:
Ms. Debbie Trujillo
505.454.2504
1.800.588.7232
dtrujillo@luna.edu



GENERAL AGRICULTURE — Associate of Applied Science Degree



For Further Information Contact:
Mr. Gary Martinez
505.454.2522
1.800.588.7232
gmartinez@luna.edu

BUSINESS ADMINISTRATION — Associate of Applied Science Degree

For Further Information Contact:
Ms. Renée Garcia
505.454.5327
1.800.588.7232
rgarcia@luna.edu



LCC Summer Schedule

Course	Sec	Title	Days	Dates	Times	Campus	Instructor
ACCT218	01	QuickBooks	-M-W-F-	06/06/11 - 07/29/11	8:00AM - 11:40AM	Main Campus	Vega, Tana
AG105E	01	Intrdctn to Animal Science (DL)	-M-W---	06/06/11 - 07/29/11	5:30PM - 8:20PM	Online Course	Gonzales,J
ANTH103	01	Introduction to Anthropology	-MTWR--	06/06/11 - 07/29/11	1:00PM - 2:15PM	Main Campus	{Staff}
ANTH103E	20	Intrdctn to Anthropology (DL)	--T-R--	06/07/11 - 07/29/11	6:00PM - 8:50PM	Online Course	Beil, J.
ANTH221	01	Cultures of the World	-MTWR--	06/06/11 - 07/29/11	11:00AM - 12:15PM	Main Campus	{Staff}
ANTH221E	20	Cultures of the World (DL)	-M-W---	06/06/11 - 07/29/11	6:00PM - 8:50PM	Online Course	Beil, J.
ART106	01	Introduction to Drawing	-MTWR--	06/06/11 - 07/29/11	2:00PM - 3:40PM	Main Campus	Bohm, N
ART110	01	Introduction to Art	-MTWR--	06/06/11 - 07/29/11	12:30PM - 1:45PM	Main Campus	Bohm, N
ASE101E	01	Intrdtn to Renewable Energy (DL)	-M-W---	06/06/11 - 07/29/11	6:00PM - 8:50PM	Online Course	Jencka, D
AUTO124	01	Heating and Air Conditioning	-MTWR--	06/06/11 - 07/29/11	9:00AM - 11:55AM	Main Campus	Sandoval,E
AUTO128	01	Automatic Trnsmns & Drivetrain	-MTWR--	06/06/11 - 07/29/11	8:30AM - 12:00PM	Main Campus	Vance, P.
BIO103E	01	Medical Terminology (DL)	-M-W---	06/06/11 - 07/29/11	9:00AM - 10:50AM	Online Course	Olson, S
BIO103E	02	Medical Terminology (DL)	--T-R--	06/07/11 - 07/29/11	9:00AM - 10:50AM	Online Course	Olson, S
BIO105	01	Biology for Non-Majors	-MTWR--	06/06/11 - 07/29/11	3:00PM - 4:20PM	Main Campus	Hibberd-Ki
BIO105L	01	Biology for Non-Majors Lab	----F-	06/10/11 - 07/29/11	1:00PM - 5:20PM	Main Campus	Hibberd-Ki
BIO201	01	Medical Microbiology	-MT----	06/06/11 - 07/29/11	8:00AM - 10:50AM	Main Campus	Montano R
BIO201L	01	Medical Microbiology Lab	---W---	06/08/11 - 07/29/11	8:00AM - 11:50AM	Main Campus	Montano R
BIO201L	02	Medical Microbiology Lab	---W---	06/08/11 - 07/29/11	1:00PM - 4:50PM	Main Campus	Montano R
BIO210	01	Nutrition	--TWR--	06/07/11 - 07/29/11	10:00AM - 11:50AM	Main Campus	Bird, D.
BIO210E	01	Nutrition (DL)	--T-R--	06/07/11 - 07/29/11	1:00PM - 3:50PM	Online Course	Olson, S
BT215	01	Concrete Finishing	-MT----	06/06/11 - 07/29/11	8:00AM - 3:00PM	Main Campus	Montoya, J
BUS105E	01	Introduction to Business (DL)	-M-W-F-	06/06/11 - 07/29/11	7:00PM - 8:40PM	Online Course	Thomas, G.
BUS105E	02	Introduction to Business (DL)	--T-R--	06/07/11 - 07/29/11	5:30PM - 8:20PM	Online Course	GutierrezJ
CDL100	01	Commercial Driver's License I	-MTWR--	06/06/11 - 06/09/11	5:30PM - 9:30PM	Main Campus	Saiz, L
CDL105	15	Commercial Driver's License II	-MTWR--	06/13/11 - 06/16/11	5:30PM - 9:30PM	Main Campus	Saiz, L
CDL110	01	Commercial Driver's License III	-MTWR--	06/20/11 - 06/23/11	5:30PM - 9:30PM	Main Campus	Saiz, L
CDL115	01	Commercial Driver's License IV	-MTWR--	06/27/11 - 06/30/11	5:30PM - 9:30PM	Main Campus	Saiz, L
CDL120	01	Commercial Driver's License V	--TWR-F-	07/05/11 - 07/08/11	5:30PM - 9:30PM	Main Campus	Saiz, L
CDL125	01	Commercial Driver's License VI	----FS	06/03/11 - 07/29/11	8:00AM - 5:00PM	Main Campus	Saiz, L
CNA100	01	Nursing Assistant Training	-MTWRF-	05/16/11 - 05/23/11	8:00AM - 5:00PM	Main Campus	Lucero, L
CNA100	02	Nursing Assistant Training	-M-W---	06/06/11 - 06/22/11	8:00AM - 5:00PM	Main Campus	Lucero, L
CNA100	03	Nursing Assistant Training	--T-R--	06/07/11 - 06/23/11	8:00AM - 5:00PM	Main Campus	Lucero, L
CNA100	40	Nursing Assistant Training	-MTWRF-	06/08/11 - 06/15/11	8:00AM - 5:00PM	Off Site	Padilla, E
CNA100	41	Nursing Assistant Training	-MTWRF-	07/19/11 - 07/26/11	8:00AM - 5:00PM	Off Site	Padilla, E
CNA100L	01	Nursing Assistant Training Lab	--TWR-F-	05/24/11 - 05/27/11	8:00AM - 5:00PM	Main Campus	Lucero, L
CNA100L	02	Nursing Assistant Training Lab	-M-W---	06/27/11 - 07/27/11	8:00AM - 5:00PM	Main Campus	Lucero, L
CNA100L	03	Nursing Assistant Training Lab	--T-R--	06/28/11 - 07/28/11	8:00AM - 5:00PM	Main Campus	Lucero, L
CNA100L	40	Nursing Assistant Training Lab	-MTWRF-	06/16/11 - 06/22/11	8:00AM - 5:00PM	Off Site	Padilla, E
CNA100L	41	Nursing Assistant Training Lab	-MTWRF-	07/27/11 - 08/02/11	8:00AM - 5:00PM	Off Site	Padilla, E
CRT100	01	Introduction to Collision Repair	--T-R--	06/07/11 - 07/29/11	2:00PM - 7:00PM	Main Campus	Baca, A

LCC Summer Schedule

Course	Sec	Title	Days	Dates	Times	Campus	Instructor
CRT135	01	Introduction to Airbrushing	-M-W--	06/06/11 - 07/29/11	8:00AM - 1:00PM	Main Campus	Martinez,G
CRT140	01	Estimation for Collision Repair	--T-R--	06/07/11 - 07/29/11	8:00AM - 1:00PM	Main Campus	Baca, A
CS105	01	Introduction to Computer Science	-M-W-F-	06/06/11 - 07/29/11	9:00AM - 11:30AM	Main Campus	Collins, N
CS151	01	Introduction to Robotics	-MTWR--	06/06/11 - 07/29/11	1:00PM - 2:50PM	Main Campus	Collins, N
CSA150	01	Computer Fundamentals	--T-R--	06/07/11 - 07/29/11	8:00AM - 11:50AM	Main Campus	Gutierrez
CSA150	02	Computer Fundamentals	--T-R--	06/07/11 - 07/29/11	1:00PM - 4:50PM	Main Campus	Gutierrez
CSA150	03	Computer Fundamentals	-M-W--	06/06/11 - 07/29/11	9:00AM - 12:40PM	Main Campus	Lobato, B
CSA150	40	Computer Fundamentals	--T-R--	06/07/11 - 07/29/11	1:00PM - 4:50PM	Off Site	Lobato, B
CSA150E	01	Computer Fundamentals (DL)	--T-R--	06/07/11 - 07/29/11	5:30PM - 9:10PM	Online Course	Wolff L
CSA208	01	Microsoft Access	-M-W--	06/06/11 - 07/29/11	1:00PM - 4:40PM	Main Campus	Lobato, B
DENT209	01	Professional Ethics	-M----	06/06/11 - 07/29/11	11:00AM - 4:00PM	Main Campus	Ortega, D
DENT220	01	Dental Office Management	--T----	06/07/11 - 07/29/11	11:00AM - 4:00PM	Main Campus	Pacheco, G
DENT270	01	Clinical Training/Practicum II	---WR--	06/08/11 - 07/29/11	11:00AM - 5:00PM	Main Campus	Pacheco, G
DENT270	02	Clinical Training/Practicum II	---WR--	06/08/11 - 07/29/11	11:00AM - 5:00PM	Main Campus	Ortega, D
DTEC101	01	Engnrng Graphics & Basic AutoCAD	-MTWR--	06/06/11 - 07/29/11	10:00AM - 11:50AM	Main Campus	{Staff}
DTEC208	01	Plane Surveying	--T-R--	06/07/11 - 07/29/11	4:30PM - 8:20PM	Main Campus	Gamertsf,J
DTEC220	01	Advanced Drafting and Design	-MTWR--	06/06/11 - 07/29/11	8:00AM - 9:50AM	Main Campus	Ortega, L
ECME123R	20	Intro Rdng/Literacy Dvlpmnt(ITV)	-M-W--	06/06/11 - 07/29/11	8:00AM - 10:50AM	Springer	{Staff}
ECME123R	40	Intro Rdng/Literacy Dvlpmnt(ITV)	-M-W--	06/06/11 - 07/29/11	8:00AM - 10:50AM	Off Site	{Staff}
ECME123T	01	Intro Reading & Literacy Dvlpmnt	-M-W--	06/06/11 - 07/29/11	8:00AM - 10:50AM	Main Campus	{Staff}
ECON208E	01	Principles of Macroeconomics(DL)	--T-R--	06/07/11 - 07/29/11	6:00PM - 8:50PM	Online Course	Behnke, P.
EDUC205	01	Teaching Elementary School Math	--T-R--	06/07/11 - 07/29/11	8:00AM - 10:50AM	Main Campus	{Staff}
EDUC214E	01	Intrdctn to Special Eductn (DL)	--T-R--	06/07/11 - 07/29/11	5:00PM - 7:50PM	Online Course	{Staff}
ENG102	01	Introduction to Grammar	-MTWR--	06/06/11 - 07/29/11	1:00PM - 2:50PM	Main Campus	Nolan, J
ENG104	01	Grammar Usage and Writing	-MTWR--	06/06/11 - 07/29/11	9:00AM - 10:15AM	Main Campus	Nolan, J
ENG104	02	Grammar Usage and Writing	-MTWR--	06/06/11 - 07/29/11	11:00AM - 12:15PM	Main Campus	Hampleman,
ENG104	30	Grammar Usage and Writing	-MTWR--	06/06/11 - 07/29/11	11:00AM - 12:20PM	Santa Rosa	Raven, N.
ENG104	40	Grammar Usage and Writing	-M-W--	06/06/11 - 07/29/11	1:00PM - 3:50PM	Off Site	Martinez,W
ENG104E	01	Grammar Usage & Writing (DL)	-M-W--	06/06/11 - 07/29/11	9:00AM - 11:50AM	Online Course	Peterson,C
ENG111	01	Freshman Composition I	-MTWR--	06/06/11 - 07/29/11	8:00AM - 9:15AM	Main Campus	Ekeoha, G
ENG111	02	Freshman Composition I	-MTWR--	06/06/11 - 07/29/11	9:30AM - 10:45AM	Main Campus	Ekeoha, G
ENG111	03	Freshman Composition I	-MTWR--	06/06/11 - 07/29/11	12:30PM - 1:45PM	Main Campus	Hampleman,
ENG111E	01	Freshman Composition I (DL)	-M-W--	06/06/11 - 07/29/11	9:00AM - 11:50AM	Online Course	Mitchell,M
ENG115	01	Freshman Composition II	-MTWR--	06/06/11 - 07/29/11	11:00AM - 12:15PM	Main Campus	Ekeoha, G
ENG115	02	Freshman Composition II	-MTWR--	06/06/11 - 07/29/11	2:00PM - 3:15PM	Main Campus	Peterson,C
ENG115	03	Freshman Composition II	--T-R--	06/07/11 - 07/29/11	6:00PM - 8:50PM	Main Campus	Romigh, M.
ENG115E	01	Freshman Composition II (DL)	--T-R--	06/07/11 - 07/29/11	9:00AM - 11:50AM	Online Course	Mitchell,M
ENG121E	20	Intro Creative Wrtnng/Fictn (DL)	--T-R--	06/07/11 - 07/29/11	10:00AM - 12:50PM	Online Course	Goodyear,S
ENG203	01	American Literature I	-MTWR--	06/06/11 - 07/29/11	12:00PM - 1:15PM	Main Campus	Peterson,C
EQU120E	01	Equine Health and Nutrition (DL)	--T-R--	06/07/11 - 07/29/11	5:30PM - 8:20PM	Online Course	Gonzales,J
FCMK100	01	Intr to Furniture & Cabinet-Mkng	----F-	06/03/11 - 07/22/11	8:00AM - 3:30PM	Main Campus	Madrid, F.

LCC Summer Schedule

Course	Sec	Title	Days	Dates	Times	Campus	Instructor
FCMK100	20	Intr to Furniture & Cabinet-Mkng	----R--	06/09/11 - 07/29/11	1:00PM - 8:00PM	Springer	Kuhlman, P
FCMK100	40	Intr to Furniture & Cabinet-Mkng	-M-W---	06/06/11 - 07/29/11	5:30PM - 9:00PM	Off Site	Main, R.
FCMK120	20	Southwest Woodworking	---W---	06/08/11 - 07/29/11	1:00PM - 8:00PM	Springer	Kuhlman, P
FS115	01	Introduction to Firefighting	-MTWR--	06/06/11 - 07/29/11	10:00AM - 12:30PM	Main Campus	Montoya, L
HIST101	01	Western Civilization I	-MTWR--	06/06/11 - 07/29/11	9:30AM - 10:45AM	Main Campus	Sickler, K
HIST161	30	American History I	-MTWR--	06/06/11 - 07/29/11	3:30PM - 4:50PM	Santa Rosa	Raven, N.
HIST161E	20	American History I (DL)	-M-W---	06/06/11 - 07/29/11	3:00PM - 5:50PM	Online Course	Beil, J.
HIST220	01	History of New Mexico	-MTWR--	06/06/11 - 07/29/11	8:00AM - 9:15AM	Main Campus	Sickler, K
HIST220E	01	History of New Mexico (DL)	--T-R--	06/07/11 - 07/29/11	2:00PM - 4:50PM	Online Course	Lopez, J
MATH101	01	Basic Mathematics	-M-W-F-	06/06/11 - 07/29/11	9:00AM - 10:50AM	Main Campus	Mares, G
MATH101	02	Basic Mathematics	-MTW---	06/06/11 - 07/29/11	5:15PM - 7:05PM	Main Campus	Mares, G
MATH105	01	General Mathematics	-MTWR--	06/06/11 - 07/29/11	1:00PM - 2:50PM	Main Campus	Mares, G
MATH105E	01	General Mathematics (DL)	-MTWR--	06/06/11 - 07/29/11	9:00AM - 10:50AM	Online Course	Martinez,L
MATH105R	20	General Mathematics (ITV)	-MTWR--	06/06/11 - 07/29/11	9:00AM - 10:50AM	Springer	Sanchez, B
MATH105R	30	General Mathematics (ITV)	-MTWR--	06/06/11 - 07/29/11	9:00AM - 10:50AM	Santa Rosa	Sanchez, B
MATH105T	01	General Mathematics	-MTWR--	06/06/11 - 07/29/11	9:00AM - 10:50AM	Main Campus	Sanchez, B
MATH106	01	Algebra with Applications	-MTWR--	06/06/11 - 07/29/11	9:00AM - 10:50AM	Main Campus	Smith, J
MATH106	02	Algebra with Applications	-MTWR--	06/06/11 - 07/29/11	1:00PM - 2:50PM	Main Campus	Smith, J
MATH106	30	Algebra with Applications	-MTWR--	06/06/11 - 07/29/11	1:00PM - 2:40PM	Santa Rosa	Raven, N.
MATH116	01	Intermediate Algebra	-MTWR--	06/06/11 - 07/29/11	1:00PM - 2:50PM	Main Campus	Gonzales,D
MATH116	02	Intermediate Algebra	-MTWR--	06/06/11 - 07/29/11	3:00PM - 4:50PM	Main Campus	Duncan, R
MATH116	30	Intermediate Algebra	-MTWR--	06/06/11 - 07/29/11	1:00PM - 2:50PM	Santa Rosa	Leon, J
MATH130	01	Statistics	-MTW---	06/06/11 - 07/29/11	3:30PM - 5:10PM	Main Campus	Gonzales,D
MATH130R	20	Statistics (ITV)	-MTW---	06/06/11 - 07/29/11	11:00AM - 12:40PM	Springer	Leon, J
MATH130T	30	Statistics	-MTW---	06/06/11 - 07/29/11	11:00AM - 12:40PM	Santa Rosa	Leon, J
MATH180	01	College Algebra	-MTWR--	06/06/11 - 07/29/11	9:00AM - 10:50AM	Main Campus	Bustos, M
MATH180R	20	College Algebra (ITV)	-MTWR--	06/06/11 - 07/29/11	2:00PM - 3:50PM	Springer	Sanchez, B
MATH180R	40	College Algebra (ITV)	-MTWR--	06/06/11 - 07/29/11	2:00PM - 3:50PM	Off Site	Sanchez, B
MATH180T	01	College Algebra	-MTWR--	06/06/11 - 07/29/11	2:00PM - 3:50PM	Main Campus	Sanchez, B
MMC101	01	Intrdn to Mass Media Cmncnts	--TWR--	06/07/11 - 07/29/11	3:00PM - 4:40PM	Main Campus	Bachicha,K
MMC130	01	Introduction to Media Arts	--TWR--	06/07/11 - 07/29/11	12:00PM - 2:25PM	Main Campus	Arguello,A
MMC135	01	Intrdctn to Digital Filmmaking	--TWR--	06/07/11 - 07/29/11	9:00AM - 11:25AM	Main Campus	Bachicha,K
MS140	40	Military Ldrshp: Theory/Practice	-M-W-F-	06/06/11 - 07/29/11	12:00PM - 1:50PM	Off Site	{Staff}
MS215E	01	American Military History (DL)	--T-R--	06/07/11 - 07/29/11	5:00PM - 7:50PM	Online Course	{Staff}
MUS108	01	Music Appreciation	--T-R--	06/07/11 - 07/29/11	1:00PM - 3:50PM	Main Campus	Vasquez, F
OADM100	01	Fundamentals of Keyboarding	-----F-	06/10/11 - 07/29/11	8:00AM - 10:00AM	Main Campus	Mitchell,M
PE112	01	Physical Fitness	-MTWRF-	05/16/11 - 07/29/11	TBA	Main Campus	Garcia, D
PE112	40	Physical Fitness	--TWR--	06/07/11 - 07/29/11	5:00PM - 6:10PM	Off Site	Abeyta, J
PE112	41	Physical Fitness	--TWR--	06/07/11 - 07/29/11	3:30PM - 4:40PM	Off Site	Abeyta, J
PE113	01	Weight Training	-MTWRF-	05/16/11 - 07/29/11	TBA	Main Campus	Garcia, D
PE116	20	Step Aerobics	--T-R--	06/07/11 - 07/29/11	7:00AM - 8:40AM	Springer	Jespersen,

LCC Summer Schedule

Course	Sec	Title	Days	Dates	Times	Campus	Instructor
PE117	01	Kickboxing and Step Combo	-MTW---	06/06/11 - 07/29/11	12:00PM - 1:10PM	Main Campus	Marr-Monto
PE135	30	Yoga	-M-W-F-	06/06/11 - 07/29/11	9:00AM - 10:10AM	Santa Rosa	DigernessJ
PE138	01	Self-Defense Karate	-M-W---	06/06/11 - 07/29/11	5:30PM - 7:30PM	Main Campus	Ortzw, J
PE138	02	Self-Defense Karate	--T-R--	06/07/11 - 07/29/11	5:30PM - 7:30PM	Main Campus	Ortzw, J
PHIL101E	01	Introduction to Philosophy (DL)	--T-R--	06/07/11 - 07/29/11	2:30PM - 5:20PM	Online Course	Griego,J,S
PHYS111	01	Introduction to Physics	-MTWR--	06/06/11 - 07/29/11	10:00AM - 11:30AM	Main Campus	Duncan, R
PHYS111L	01	Introduction to Physics Lab	-M-W---	06/06/11 - 07/29/11	12:00PM - 1:50PM	Main Campus	Duncan, R
PHYS111L	02	Introduction to Physics Lab	--T-R--	06/07/11 - 07/29/11	12:00PM - 1:50PM	Main Campus	Duncan, R
POLS151E	01	American Nat'l Government (DL)	--T-R--	06/07/11 - 07/29/11	10:00AM - 12:50PM	Online Course	Lopez, J
PSYC101	01	Introduction to Psychology	-MTWR--	06/06/11 - 07/29/11	9:00AM - 10:15AM	Main Campus	Fowler, R
PSYC101E	01	Introduction to Psychology (DL)	-M-W---	06/06/11 - 07/29/11	2:30PM - 5:20PM	Online Course	Griego,J,S
PSYC101E	02	Introduction to Psychology (DL)	-M-W---	06/06/11 - 07/29/11	5:15PM - 8:05PM	Online Course	Rael, B.
PSYC242E	01	Developmental Life Span (DL)	--T----	06/07/11 - 07/29/11	9:00AM - 3:50PM	Online Course	Hughes, R
PSYC242E	02	Developmental Life Span (DL)	---W---	06/08/11 - 07/29/11	9:00AM - 3:50PM	Online Course	Hughes, R
QUIL112	01	Quick Rotary Cut Quilts	-----F-	06/03/11 - 07/22/11	8:00AM - 5:00PM	Main Campus	Chibante,L
QUIL205	01	Quilting and Sewing II	-----S	06/04/11 - 07/23/11	8:00AM - 5:00PM	Main Campus	Chibante,L
READ100	01	Basic Reading	-MTWR--	06/06/11 - 07/29/11	11:00AM - 12:50PM	Main Campus	Valencia,A
READ105	01	Developmental Reading	-MTWR--	06/06/11 - 07/29/11	11:00AM - 12:15PM	Main Campus	Nolan, J
READ105	02	Developmental Reading	-MTWR--	06/06/11 - 07/29/11	1:00PM - 2:15PM	Main Campus	Valencia,A
READ105	40	Developmental Reading	--T-R--	06/07/11 - 07/29/11	1:00PM - 3:50PM	Off Site	Sena, K
READ105E	01	Developmental Reading (DL)	-MTWR--	06/06/11 - 07/29/11	9:00AM - 10:15AM	Online Course	Hampleman,
SOC101	01	Introduction to Sociology	-MTWRF-	05/23/11 - 06/03/11	9:00AM - 3:00PM	Main Campus	Armijo C
SOC101E	01	Introduction to Sociology (DL)	--T-R--	06/07/11 - 07/29/11	7:00PM - 9:50PM	Online Course	Lopez, J
SPAN100	20	Conversational Spanish	-MT----	06/06/11 - 07/29/11	5:00PM - 7:50PM	Springer	Trujillo,A
SPAN100	40	Conversational Spanish	--T-R--	06/07/11 - 07/29/11	9:00AM - 11:50AM	Off Site	Lobato, B
SPAN101	01	Beginning Spanish I	-MTWR--	06/06/11 - 07/29/11	12:30PM - 1:45PM	Main Campus	Ortega, J
SPAN101E	01	Beginning Spanish I (DL)	-M-W---	06/06/11 - 07/29/11	7:00PM - 9:50PM	Online Course	Fulgenzi,J
SPAN102	01	Beginning Spanish II	-MTWR--	06/06/11 - 07/29/11	2:00PM - 3:15PM	Main Campus	Ortega, J
SPCH111	01	Public Speaking	-MTWR--	06/06/11 - 07/29/11	8:00AM - 9:15AM	Main Campus	Tapia, L.
SPCH111	02	Public Speaking	-MTWR--	06/06/11 - 07/29/11	1:00PM - 2:15PM	Main Campus	Simpson, D
SPCH112	30	Interpersonal Communication	-M-W---	06/06/11 - 07/29/11	3:00PM - 5:50PM	Santa Rosa	Leon, J
SPCH112E	20	Interpersonal Communication (DL)	--T-R--	06/07/11 - 07/29/11	3:00PM - 5:50PM	Online Course	Goodyear,S
SSD156	20	Computer Graphics	--T----	06/07/11 - 07/29/11	8:00AM - 4:50PM	Springer	Arellano,D
STGS148	01	Intrdtn to Film Prodcn Workflow	--T-R--	06/07/11 - 07/29/11	6:00PM - 8:50PM	Main Campus	Bachicha,K
THEO232E	01	World Religions (DL)	-M-W---	06/06/11 - 07/29/11	10:00AM - 12:50PM	Online Course	Griego,J,S
VGD228	01	Intermediate Video Game Dvlpmnt	-MTW---	06/06/11 - 07/29/11	3:00PM - 4:50PM	Main Campus	Collins, N
VGD228L	01	Intermdte Video Game Dvlpmnt Lab	----RF-	06/09/11 - 07/29/11	3:00PM - 4:50PM	Main Campus	Collins, N
WELD102	40	Shielded Metal Arc Welding	-M-W---	06/06/11 - 07/29/11	5:30PM - 9:10PM	Off Site	Honeyfield
WELD106	20	Blueprint Rdnng/Math for Welders	---WR--	06/08/11 - 07/29/11	5:00PM - 9:00PM	Springer	Arguello,A
WELD116	01	Advanced Layout and Fabrication	-M-W---	06/06/11 - 07/29/11	8:00AM - 12:00PM	Main Campus	Moore, C
WELD116	02	Advanced Layout and Fabrication	--T-R--	06/07/11 - 07/29/11	12:00PM - 4:00PM	Main Campus	Moore, C
WELD118	01	Ornamental Art Welding	-M-W---	06/06/11 - 07/29/11	1:00PM - 5:00PM	Main Campus	Moore, C
WELD118	03	Ornamental Art Welding	--T-R--	06/07/11 - 07/29/11	4:30PM - 8:30PM	Main Campus	Moore, C
WELD118	30	Ornamental Art Welding	-M-W---	06/06/11 - 07/29/11	5:00PM - 9:00PM	Santa Rosa	Padilla, L