

# LCC Shared Governance

December 12, 2017

Criteria 5B Shared Governance SubCommittee: Jessica McGee-Facilitator

Students: Gisela Acosta, Caitlin Nelson

Faculty: Jessica McGee, Betsy Sanchez, Sierra Fernandez, Monica Rosetti

Staff: Sharrise Sanchez, Karen Wezwick, Matthew Cordova

Administration: Dr. Sharon Lalla, President Ricky Serna, Brenda Ortega

# HLC Criteria 5B

- 5B. The institution's governance and administrative structures promote effective leadership and support collaborative processes that enable the institution to fulfill its mission.

# What is Shared Governance?

- Shared governance is the collaborative model of decision making that includes the Board, the President, Administration, Faculty, Staff, and Students. The purpose of shared governance is to adhere to basic governance principles such as transparency, responsiveness, and accountability.
- Shared governance is the process by which institutional direction and policies are developed, modified, and implemented. Administration, faculty, staff, and students comprise LCC constituent groups.
- Issues requiring governance action shall be considered only when constituent groups or their designated representatives have been afforded ample opportunity to address their positions on proposed actions.

# Shared Governance SubCommittee Work

- Comprised of faculty, staff, students, and administration
- Participated in 6 working sessions
- Sent questionnaire to faculty, staff, and students
- Proposed shared governance structure
- Obtain Board Approval for shared governance structure, as early as Dec 12

# Board of Trustees Standing Committees

Board

```
graph TD; Board[Board] --- Executive[Executive]; Board --- Facilities[Facilities]; Board --- AuditFinance[Audit Finance]; Board --- AcademicAffairs[Academic Affairs];
```

Executive

Facilities

Audit Finance

Academic Affairs

# Proposed Shared Governance Structure

Board

President

Governance Council

Academic  
Leadership

Faculty  
Senate

Staff Advisory  
Senate

Student  
Government  
Reconstititional  
Senate

# Shared Governance Structure (Cont'd)

Board

President

Strategic Planning &  
Institutional Analysis  
Committee

# Shared Governance Structure (Cont'd)

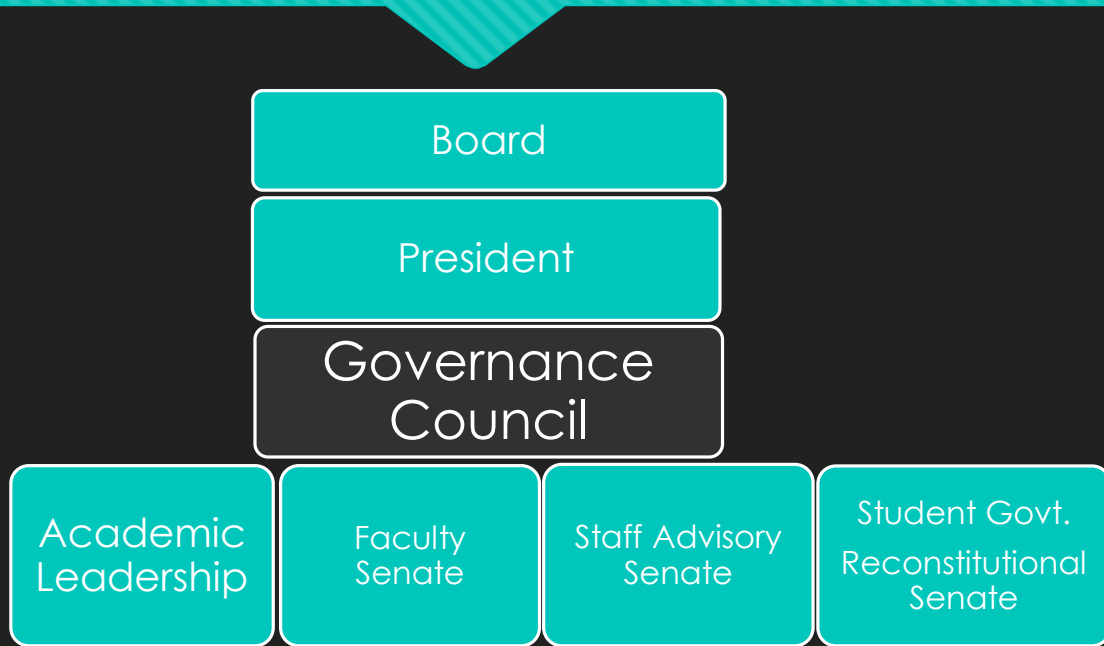
President

Retention and Completion  
Committee

Institutional-Wide Committees



# Governance Council



Governance Council: Works with the President in defining the governance groups that should be included and consulted.

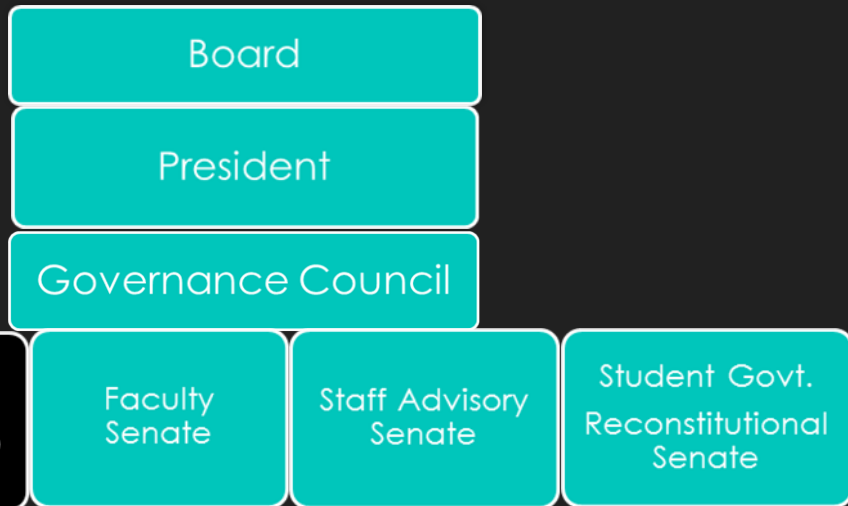
Communicates openly with the College community on the deliberations and discussions of the Council.

Sets up procedures for collaboration and inclusion of all interested parties in the work of the Council.

Uses data to prepare recommendations for consideration by the President and the Board of Trustees.

Includes an equal number of representatives from faculty, staff, students, and administrators as members of the Council. Representatives to be selected by each constituent group.

# Academic Leadership



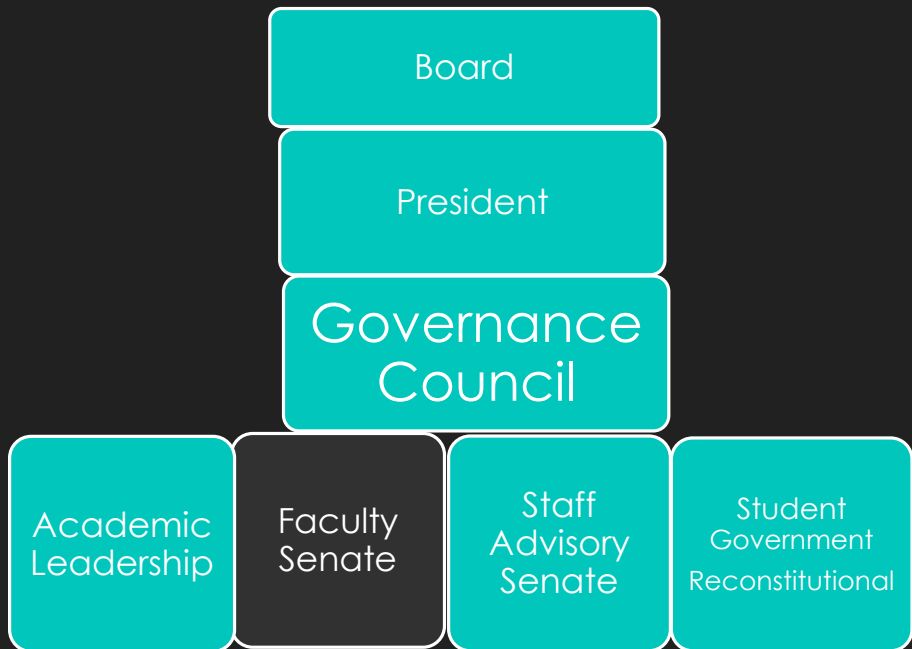
Academic Leadership: Keeps all Academic Departments informed of the work of the Shared Governance Council and conducts discussions seeking their feedback.

Represents the views of the Academic Directors, Satellite Director, and Librarian to the Governance Council.

Participates with the President in establishing procedures for implementing the Board of Trustees' policy on shared governance.

Works with Vice President of Instruction related to academic matters and student success.

# Faculty Senate

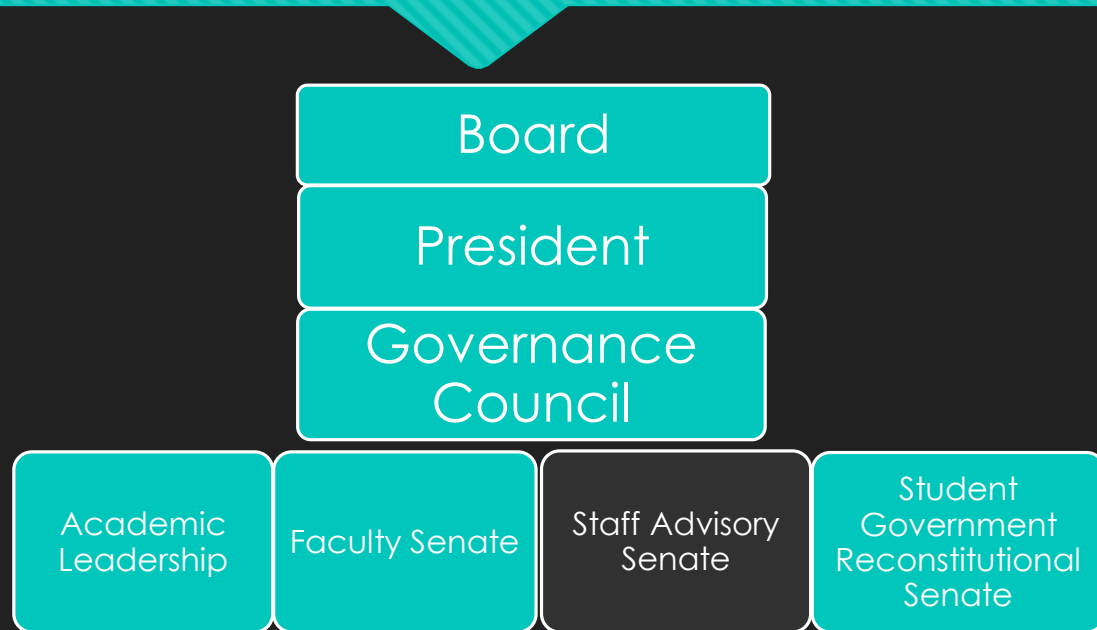


Faculty Senate: Addresses academic matters pertaining to faculty, curriculum, and assessment activities. Academic Directors appoint a faculty to each working committee.

Informs, solicits, and represents the views of the faculty and instructors to the Governance Council.

Vice President of Academics is a non-voting member. Faculty Senate members are elected officers and members from all academic departments.

# Staff Advisory Senate



Staff Advisory Senate: Keep all staff informed of the work of the Governance Council and conduct discussions seeking staff feedback.

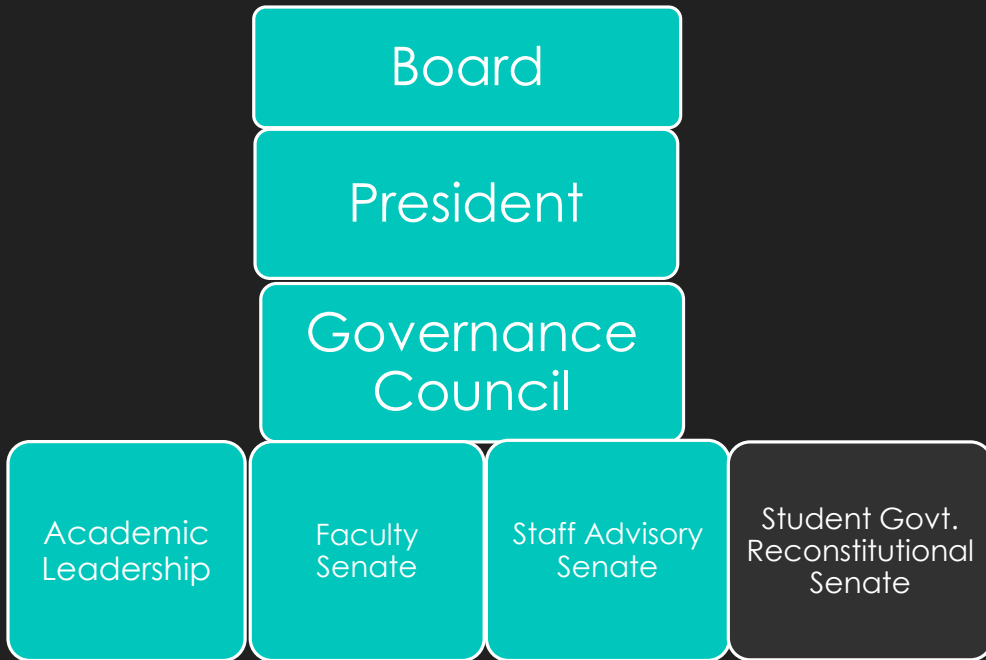
Solicit and represent the views of staff to the Governance Council.

Participate with the President in establishing procedures for implementing the Board of Trustee's policy on shared governance.

Establish and maintain processes for involving staff in the academic progress and student success work of the College.

Staff representatives will be elected.

# Student Govt. (Reconstititional Senate)



Student Government (Reconstititional Senate): Represents the student body of LCC and encourages cooperation and communication between the students, faculty, administration, board members and all campus organizations.

Provides a forum for student expression and the exchange of student-faculty views.

Encourages educational retention and aids in the achievement of educational goals.

Charters and registers various clubs on campus.

Plans, initiates and follows through with special projects on campus.

Currently enrolled students are generally elected as officers and members.

# Strategic Planning & Institutional Analysis

Board

Creates and maintains a College Strategic Plan that is presented annually to the Governing Board through the College President for consideration and Board action, and consistent with the Board-approved plan.

President

At the direction of the President, implements those activities of the College necessary to maintain good standing with The Higher Learning Commission.

Reports regularly to the Governance Council.

Strategic  
Planning &  
Institutional  
Analysis

The Vice President of Academics and Director of Student Services will serve as Co-Chairs. Members will consist of the Vice President of Academics, one Director, the Faculty Senate Chair or designee, two other Faculty Members, three Classified/Exempt Staff Members, a member representing Institutional Research, and one member of Student Services.

# Retention and Completion Council

President

Retention  
and  
Completion  
Council

Retention and Completion Council: The overarching purpose of this committee is to bridge academic and student support services in a manner that maximizes efforts to measure, research and implement activities that directly increase student matriculation and persistence.

The Retention and Completion Council will be equally comprised of faculty and staff. The council will select its own voting chair among members of the committee. Members include, at a minimum: 2 Academic Directors appointed by the Vice President of Academics, two faculty or adjunct, the Manager for Student Success Service, Registrar, Financial Aid Manager and Dual Credit Coordinator.

# Institutional-Wide Committees

President

Institutional-  
Wide  
Committees