

# The Luna Light

Luna  
Community  
College

*"The People's College"*

Mission Statement: "Creating Opportunities for You!"

Volume 3, Issue 41

December 13, 2013



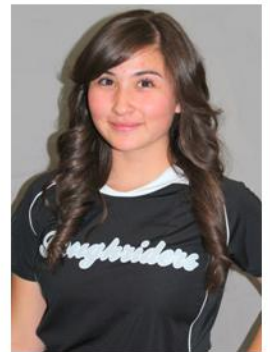
**These two Luna Community College Billboards are being displayed in the Albuquerque area. The top photo, is a digital billboard located on 152 Montano Rd. NW and the second is located on mile marker 240 on I-25. The weekly impressions for the digital billboard is right around 73,000 and the billboard on I-25 has around 147,000 weekly impressions.**



LCC Noches de Familia staff met recently with the program evaluator to review the program evaluation report and work toward future funding opportunities for the program. Pictured (l-r) are: Dr. Rey Martinez, program evaluator, Ray C. Martinez, collaborator, Elena Martinez, collaborator, Geri Roper, promotora, Cruz Flores, coordinator.

## LCC's Martinez receives honor

Luna Community College student Montana Martinez has been selected to represent LCC as its nominee in the 2014 All-USA Community College Academic Team competition.



**Montana Martinez**

Martinez' commitment to academic excellence and community service is commendable. Martinez will be placed in competition for the All-USA Community College Academic Team, Coca-Cola Community College Academic Team, and the New Century Scholars Awards. Phi Theta Kappa headquarters will notify scholars of their placement on national teams by April.

"It's a great honor," says Martinez. "Being a student-athlete means being a student first."

Martinez is a catcher on the Lady Rough Riders Softball Team.

Martinez has a 3.9 cumulative grade point average. She is majoring in general studies.

**To read the full story, see Monday's Luna Light**