

# The Luna Light



*“The People’s College”  
Becoming The Premier Rural Community College in America*

Volume 4 Issue 5

February 7-February 13



**How cold has it been in recent days in northern New Mexico? Don't ask this mallard as he prepares to enter the freezing water of the Pecos River in La Fragua on Saturday afternoon. One thing for sure, this mallard wasn't exactly doing the Disco Duck. It swam in the water for just seconds before flying off. For more snow photos, see page 4.**

## What a week

### Weather hampers LCC's formal learning process

**By Dr. Pete Campos**

This week, the weather hampered our formal learning process in our schools, colleges and universities all across the state. However, we were exposed to a different set of learning experiences such as driving on roads and highways that were snow packed and icy for days, being pierced with below-zero temperatures each time we went outdoors, responding to bursting water lines and heating systems being pushed to the limit and realizing how much we depend on natural gas, propane and electricity to heat our homes so we could re-

main as comfortable as possible during extreme cold weather.

While we are not sure how long full recovery from this week's arctic-like conditions will take, several things are certain; we learned something new, we were able to apply intuitive and newly discovered survival skills, we taught our children how to prepare for and respond during bad weather, we are reminded not to take each other for granted and we were reminded that the drastic changes in weather conditions are

**Continued on page 5**



## **We need 10 actors, ages 7-10**

Who are good readers to Help Present a Series of Stories  
About Children in New Mexico History

# **SOMBRERO**

A Play from the life of young Alfonso Esquibel in the early 1900s

DICHO: *"Si huyes de lo que temes, te seguira toda la vida"*

TRANS: *"If you flee from what you fear, it will follow you all your life"*

**Rehersals:** February 10 – April 10, 2011

Thursdays & Fridays for 8 weeks

**Hours:** 3:30 pm – 5:30 pm – after school

**Tuition:** \$80.00 *ask about scholarships*

**Where:** Methodist Church, 8<sup>th</sup> Street & National



To sign up, E-mail: [designultd@newmexico.com](mailto:designultd@newmexico.com)

Or call Caroline Rackley (h) 425-6092 (cell) 505-217-6169, Call LCC 454-5311

*a teatrojovent/young theatre production*

*in partnership with Luna Community College, Community Education programs*





# Luna CC speaks out

## What was your favorite part of Super Bowl XLV?



**Shawna Lee Salazar**  
Nursing

“When the Steelers caught up to the Packers in the third quarter. At that time, I thought the Steelers were going to win.”



**Dr. Vidal Martinez**  
Vice-President for Academics

“Bringing family together.”



**Gwendolyn Mares**  
Math Instructor

“With about three minutes left in the fourth quarter I thought I had won a football pot. Then the Packers made a field goal.”



**Robert Blea**  
Liberal Arts

“The commercials; they were interesting.”



**The Luna Community College Mass Media Program provides students hands-on knowledge and experience behind and in front of the camera. LCC President Dr. Pete Campos states: “The film industry is highly supportive of the Luna Program and the students who are preparing to enter the film making job market. I wholeheartedly support a permanent role for the film industry’s role in building the economy in northeast New Mexico. After all, the changes in technology within the film industry are part of the changes required for the jobs of our new economy.”**

### College Night postponed

College Night 2011 has been postponed. College Night has been rescheduled from 5 p.m. to 7:30 p.m. on Monday, Feb. 28 at the Abe Montoya Recreation Center.





For just a moment, don't think of the icy roads, busted pipes or below freezing temperatures. The winter also brings many picturesque views. Pictured clockwise: water running through the ice of The Pecos River; the sun breaking through the clouds over the piñon trees; a duck swimming in The Pecos River surrounded by ice; snow coming down in the first fall this past week; blue skies and clouds overlooking the Sangre de Cristo Mountains and the same duck that was swimming in The Pecos River, perhaps deciding to fly south for the winter.

# LCC: "The People's College"



# LCC: "The People's College"



# What a week...

Continued from page 1

like the big changes in our lives—we really don't have control over them.

Paulo Friere said in his book, *Pedagogy of the Oppressed*, "Education either functions as an instrument which is used to facilitate integration of the younger generation into the logic of the present system and bring about conformity or it becomes the practice of freedom, the means by which men and women deal critically and creatively with reality and discover how to participate in the transformation of the world."

I believe we are at the cusp of transformation in the way we live, educate and are restricted to operate within a tight operational budget that is becoming more of a reality during this legislative session. But, if we want to, we can make a positive difference even during these tough economic times! Paulo Friere also said, "Washing one's hands of the conflict

between the powerful and the powerless means to side with the powerful, not to be neutral." So, what does this really mean and how can we help make a real difference? We can ask; "how can I do my job better with less money" or "how did our ancestors do more with less"? On Friday during Native American Day at the Legislature a wise leader said, "Our ancestors used to wear the skins of animals for their clothing and during freezing weather like this week they would reverse the hide of the animal they were wearing and felt the warmth of the animal's fur."

While that statement was a light bulb moment for me, it also reminded me of how we all have leadership qualities within us and can use those qualities to transform our individual and collective environment. Steve Jobs, co-founder of Apple Computer said, "Your time is limited, so don't waste it living someone else's life. Don't be trapped by dogma –

which is living with the results of other people's thinking. Don't let the noise of other's opinions drown out your own inner voice. And most importantly, have the courage to follow your heart and intuition. Everything else is secondary."

So, it is time to use the experiences of our most recent past, call upon our gut feeling and share our sentiments with those who are leading state government, higher education and our individual institutions. The future of New Mexico and education deserves nothing less! Art Linkletter said, "I've learned it's always better to have a small percentage of a big success, than a hundred percent of nothing." Let's get with it, let the juices of our ideas flow and come up with a future educational model that will guide us for years to come. *The best ideas have always come from the most obvious and difficult circumstances!*

## Announcement

The Luna Community College Nursing Program will host a site visit review for initial accreditation of its associate nursing program.

The general public is invited to meet the Nursing Accrediting Commission Visiting Team and share comments about the program in person at a meeting scheduled for 1 p.m. on Wednesday, Feb. 16, 2011 in the LCC Allied Health Building.

Written comments are also welcome and should be submitted directly to:

Dr. Sharon Tanner, Chief Executive Officer

3343 Peachtree Road NE, Suite 500  
Atlanta, GA 30326

or e-mail:

[sitanner@nlac.org](mailto:sitanner@nlac.org)

All written comments should arrive at the National League for Nursing Accrediting Commission, Inc. by Thursday, February 10, 2011.

## Softball, baseball games cancelled

Both softball and baseball games for this past weekend and games early this week have been cancelled, according to Luna Community College Athletic Director and Facilities Director Ron Gonzales.

The softball home opener with Trinidad state yesterday was cancelled because of inclement weather. The road games with Western Oklahoma in Altus on Tuesday and Wednesday were also cancelled.

The baseball trip to Thatcher, Ariz. over the weekend was also cancelled. The Rough Riders were scheduled to play Eastern Arizona.

This was all part of recent snow storms that hit New Mexico which brought freezing temperatures, the coldest in decades.

The inclement weather and energy concerns also caused LCC to close for four days

last week.

"I've never seen it (LCC) closed down for four consecutive days," said Gonzales "I have never experienced this type of weather conditions before."

Gonzales said that he measured the weather one night last week at 28 below zero.

Gonzales reported pipe breaks in the IPC, the Learning Resource Center and the auto collision building.

"I think the right decision was made (by closing down LCC and its satellites). Safety is always a No. 1 concern. I want to thank East and West Las Vegas for their collaboration last week," said Gonzales. "I also want to thank our maintenance staff."

Gonzales was in constant communication with both superintendents.

**"I have never experienced this type of weather conditions before,"—Ron Gonzales.**

# LCC: "The People's College"



# Improving student learning: creating a culture of assessment at Luna CC

By Vidal Martinez

VP for Instruction and Student Services

In November, 2009, The Higher Learning Commission (HLC) responded to the Luna Community College (LCC) progress report. The commission indicated that the progress report consisted entirely of plans, but the report failed by a long margin to provide goals for all programs of study. Furthermore, there was absolutely no data presented in the progress report, which gave the impression that no part of the assessment plan has yet been implemented. Since there was no data, the thorough analysis of how data makes a difference at LCC was missing except in theoretical or planned terms. Since the analysis of the report, LCC has worked diligently to address the concerns.

Based on the HLC analysis, LCC developed a new assessment plan, reflective of its mission, program goals and student learning outcomes. The development of the plan began with the definition of assessment. In the beginning, the staff, faculty and administration had different perceptions of assessment, particularly in the meaning of the word – assessment. Several prevailing perceptions included the belief that assessment was another word for testing, associated with COMPASS. Others believed assessment would impinge on academic freedoms or as a punitive approach toward the faculty. After considerable discussions, meetings and professional development, the perceptions were clarified and assessment was defined. *LCC defines assessment as a process that will lead to the improvement of student learning.* The process must follow four steps as illustrated below.

## LCC Assessment Plan

All course offerings, including associate degrees and certificate programs, at Luna Community College are required to follow the four-step assessment process. They include:

- A list of expected learning outcomes
- Assessment tools that directly measure those learning outcomes

- The results of the data, and
- How the data will be used to improve student learning

To further assist faculty with the assessment plan, LCC adopted standard minimal requirements for all courses. The requirements focus on Student Learning Outcomes (SLOs) and assessment tools that directly measure those learning outcomes. All course offerings must list measurable skills or techniques that students will learn. The SLOs must consist of a minimum of four to six quantifiable statements about what students will be able to do after completing a particular course. The purpose of the standard is to:

- Establish a system of accountability and a process to improve student learning
- Create consistency and commonality in course content and curriculum delivery
- Align program learning outcomes or program goals with course outcomes
- Centralize assessment processes among the academic departments

LCC also recognized the need to sustain the new assessment plan; therefore, academic departments are required to participate in semester “Improving Student Learning” assessment reporting and Student Learning Outcomes Assessment (SLOA) Committee presentations.

Every semester, academic departments complete semester assessment activities on an aspect of their program focused on improving student learning. The director along with the faculty conduct the process. The projected have included assessment of LCC’s General Education CORE Curriculum, MMC Public Relations in Mass Media and A Review of Student Learning in ECME230: Curriculum Development and Implementation II. This initiative is relatively new in which the academic departments focus on specific learning outcomes with a targeted student population. The

purpose is to provide a baseline for future improvements, not only for improving student learning but for program quality, curriculum and instructional delivery.

The Student Learning Outcomes Assessment (SLOA) Committee has also been instrumental in the sustainability of the LCC Assessment Plan. Every semester, faculty are selected to participate in SLOA. Selected faculty participate in developing assessment methods and procedures for their particular course or courses. The faculty give oral presentations at the end of the semester and information gathered is disseminated among SLOA members, faculty and academic directors. In the fall 2010 semester, faculty participating in SLOA were required to submit written reports.

LCC also recognized a need to review goals for all programs of study. After considerable review, LCC identified several weaknesses. First, a significant number of programs did not have program-level goals. Second, several programs did not align to State standards, and finally, several programs had alignment problems with course competencies.

After considerable work, Luna Community College has established program goals for all associate and certificate programs. During the process, it was determined that the academic departments would have the flexibility in organizing the program goals. For example, a significant number of programs have defined program goals in general statements that can be translated into measurable outcomes at the course level. On the other hand, several departments have established program goals as measurable outcomes.

Creating a culture of assessment at LCC takes time, persistence and commitment. Throughout the last year, LCC has gone through a cultural transformation due to internal and external forces. Just like any change, understanding assessment and how important it is, not only for accreditation purposes, but for student success, will continue to transform Luna Community College.

# Important information on Luna CC

By Dr. Pete Campos

**Remedial Courses-** Statewide, around 50 percent of all incoming college students require one or more remedial courses and according to LCC's Humanities director, it is 80 percent . In 2010 4,925 hours were reported as remedial.

**Athletics Funding** – The athletic director states that cuts could jeopardize scholarships, travel cuts would affect NJCAA compliance, and current non-travel related expenses are minimal. Softball and baseball sport at least 55 full time students or approximately 1,650 student credit hours for fall and spring. Coach Gilpin quotes *Peter Kubn and Catherine Weinberger*, “leadership is not just a natural talent, but one that can be developed by participation in extracurricular activities”.

**Dual Credit 2 Course Limit** – LCC's coordinator notes the hardships this limit would cause as some students who have turned their lives around rely on the current program for credit recovery in order to graduate from high school. Another benefit is having extra college credits earned thus increasing the likelihood of completing a college degree or certificate. The program has mitigated the family's economic hardships in that college costs are shared.

**Efficiencies** – During the past two years, administrative positions have been eliminated by the absorption of duties and other positions have been put on hold. LCC has only two Vice- Presidents and the following positions have not been replaced: Vice-President for Student Services, Controller, Librarian, Director of Recruitment, ACCESS Center Director, to name a few. The Unrestricted Instruction and General operating budget has been reduced from an original level of \$ 12,535,039 in 2009 to the current approved budget of \$ 10,942,454, roughly \$1.6 million.

**Response to business and needs** – While faced with budget reductions, LCC continues to realign resources and make best use of existing ones as we expand into new viable areas of the market sector. One of our most recent endeavors is the CDL program which in it's first two years had a 90 percent completion rate and a 100 percent job placement rate. As the entertainment sector survives and even thrives in hard times, we have launched our Mass Media department to meet the growing industry needs.

**Economies of scale and serving the underserved-** Remote and sparsely populated describes the vast expanse of the Luna Community College's Geographic Area of Responsibility as defined by HED resulting in high outlay per student ratio. We understand our mission and our responsibility and will continue to do whatever it takes to ensure all students we are charged to serve and who desire an education have the opportunity to receive it from Luna Community College. By serving these rural areas LCC has been labeled by some groups as inefficient. We see it as the school with a heart and willingness to make things happen where others pull up the stakes and write it off as a loss without giving it a full out effort.

**Tuition Increase** – While it's understood the cost of an education is to be shared, our population base is statistically low income so we advocate for the lowest increase possible

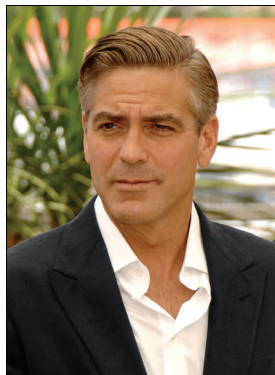
**Safeguarding of LCC Resources Critical to Operations** – LCC continues to do more with less for the past two years and asks for reconsideration of further reductions thus enabling LCC to continue to adequately serve our deserving and yes sometimes fragile population in the manner that works best.

## Celebrity Look-Alike Contest

**We are asking individuals to vote on which Luna Community College employee looks more like their celebrity look-alike. Please e-mail your vote to [jgallegos@luna.edu](mailto:jgallegos@luna.edu) or by calling extension 1200. Votes will be taken until 3 p.m. on Tuesday, Feb. 8. If you would like to volunteer for a look-alike, please call ext. 1200. Remember this is all in fun.**



and



or



and



Jesse Gallegos

George Clooney

Jesse Gallegos

Ernie

## *Ready to Escape and Re-charge?*

Register now for 8 week courses for only \$32 (per credit hour)

Course ID	Title	Location	Times	Start Dates	Days
ATHN221E-21	Cultures of the World (DL)	EWEB	2:00pm – 4:50pm	3/14/11 – 5/13/11	Mon/Wed
CNA100-42	Nursing Assistant Training	Offsite	8:00am – 5:00pm	3/15/11 – 3/22/11	MTWRF
CNA100-43	Nursing Assistant Training	Offsite	8:00am – 5:00pm	4/12/11 – 4/19/11	MTWRF
CNA100-44	Nursing Assistant Training	Offsite	8:00am – 5:00pm	5/11/11 – 5/17/11	MTWRF
CNA100L-42	Nursing Assistant Training Lab	Offsite	8:00am – 5:00pm	3/23/11 – 3/28/11	MWRF
CNA100L-43	Nursing Assistant Training Lab	Offsite	8:00am – 5:00pm	4/20/11 – 4/25/11	MWRF
CNA100L-44	Nursing Assistant Training Lab	Offsite	8:00am – 5:00pm	5/18/11 – 5/23/11	MWRF
CSA101-01	Introduction to the Internet	Main	8:30am – 4:30pm	2/19/11 – 2/26/11	Saturday
CUL107-01	Current Topics in Food Safety	Main	12:30pm – 2:10pm	3/15/11 – 5/13/11	Tuesday
DTEC118-02	Solid Modeling	Main	2:00pm – 5:50pm	3/14/11 – 5/13/11	Mon/Wed
ENG115-05	Freshman Composition II	Main	3:00pm – 4:40pm	3/14/11 – 5/13/11	MTW
MATH116-05	Intermediate Algebra	Main	4:00pm – 5:40pm	3/14/11 – 5/13/11	MTWR
PE117-02	Kickboxing & Step Combo	Main	1:00pm – 2:10pm	3/14/11 – 5/13/11	MTW
PSYC101E-20	Introduction to Psychology (DL)	EWEB	6:00pm – 8:50pm	3/14/11 – 5/13/11	Mon/Wed
PSYC242E-02	Developmental Life Span (DL)	EWEB	9:00am – 11:50am	3/15/11 – 5/13/11	Tues/Friday
PSYC258-01	Abnormal Psychology	Main	11:00am – 1:50pm	3/14/11 – 5/13/11	Mon/Wed
PE112-02	Physical Fitness	Main	TBA		MTWRF
PE113-02	Weight Training	Main	TBA		MTWRF

**Note:** Reduced tuition rates for Out-of-District and Out-of-State apply only to total enrollment of six (6) credit hours or less. Full rates apply to ALL credit hours once the student enrolls for more than six (6) credit hours with the exception of Senior Citizen rates. Tuition and fee rates are subject to change without notice. Registration and Laboratory fees are not included.

**REGISTER NOW!**  
**CLASSES START SOON!**