

*The latest news from Luna Community College*

Second Volume 3, Issue 21      Nov. 20, 2020

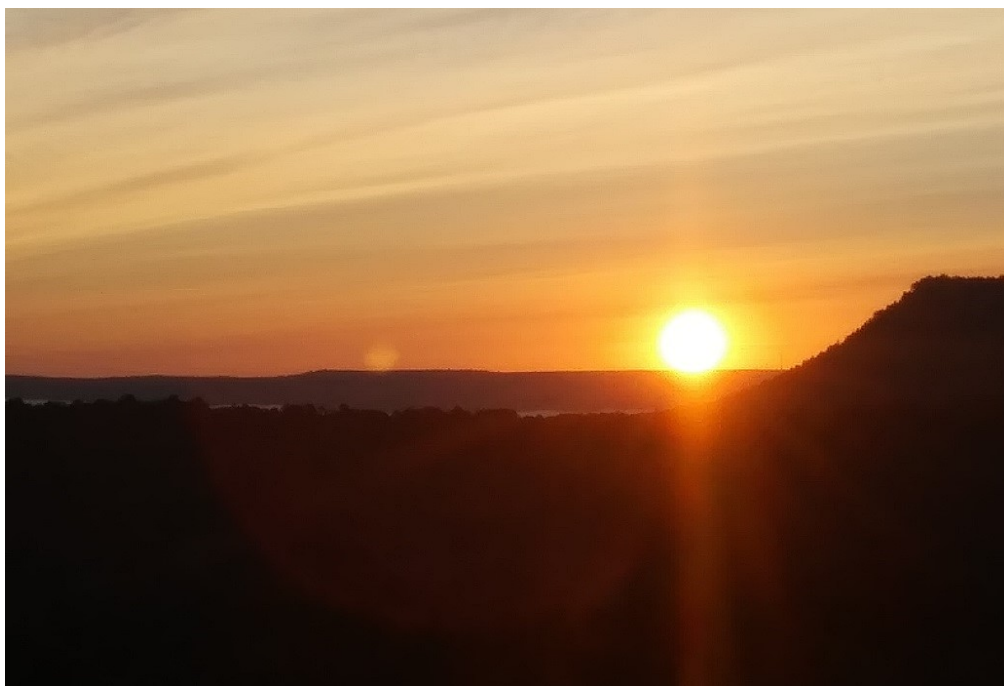
# Accreditation affirmed

## HLC removes probation as Luna looks forward to stronger future

Luna Community College is poised to move forward with a renewed commitment to serving the educational and workforce training needs of northeastern New Mexico after receiving news that it is once again accredited free of sanctions.

The Higher Learning Commission has notified Luna’s administration that its probationary status has been removed after demonstrating full compliance with all requirements for accreditation. The decision came as part of the HLC Board of Trustees’ regular November meeting.

“I want to thank Luna students, faculty, staff, administrators, board of trustees and community members for their assistance throughout this process,” said interim President Dr. Kenneth Patterson. “We look forward to making Luna Community College one of the premier colleges in the Southwest. Luna has played such an important role for so many students over the last 50-plus years, and we



**The sun rises over Bernal.**

hope to have an even greater impact over the next 50 years.”

“On behalf of New Mexico Independent Community College, we are thrilled that Luna is moving on to a new chapter,” said NMICC Director Kathy Ulibarri. “We’re so pleased that Luna Community College has achieved full accreditation status and we look forward to Luna being a full-fledged member of New Mexico’s higher education community for years to come.”

Luna had operated under HLC

sanctions since November 2017, when the Chicago-based regional accrediting agency issued a show-cause order.

In a summary of the action taken by the HLC, the (HLC) Board determined that the institution is no longer out of compliance with the criteria for accreditation, removing the institution from probation and assigning interim monitoring. The institution meets Core Components

**MORE: See Page 2**

“Luna has played such an important role for so many students over the last 50-plus years, and we hope to have an even greater impact over the next 50 years.”

**Dr. Kenneth Patterson**  
Interim President,  
Luna Community College



## Accreditation

Continued from Page 1

5.A, 5.C, and 5.D with concerns. The institution is required to host a Focused Site Visit no later than February 2022 to demonstrate ongoing progress in regards to financial viability and institutional planning.

The college’s initial response to the show-cause order, accompanied by an outpouring of testimonials in a fervent #LCCMatters campaign, resulted in the HLC lifting the order and placing Luna on probation starting in June 2018.

The college continued efforts to address the areas of deficiency raised in the original show-cause order and probation and hosted an HLC site-visit team in the spring of 2019. In conjunction with the visit, various members of the campus community collaborated on a comprehensive report that tackled not only the areas found not to be in compliance but other accreditation criteria.

On the heels of that visit and subsequent testimony by a Luna delegation in Chicago, the HLC Institutional Actions Council found that Luna had made some significant progress in most areas, meeting requirements in 18 of 21 core

component areas. But the HLC Board of Trustees voted to keep Luna on probation, allowing the college more time and opportunity to improve its performance in some regards and to demonstrate continued improvement in others.

In the past year, Luna prepared for a focused site visit from another HLC team of reviewers. The college prepared a report that updated reviewers on ongoing work to meet the areas of concern.

Areas of deficiency as determined by the HLC were specific components from Criterion Two, Integrity, Ethical & Responsible Conduct, and Criterion Five, Resources, Planning & Institutional Effectiveness.

The HLC had previously determined that Luna meets or exceeds standards in the entirety of Criterion One, Mission; Criterion Three, Teaching & Learning, Quality, Resources & Support; and Criterion Four, Teaching & Learning, Evaluation & Improvement.

Luna’s HLC report-writing team compiled evidence to show the college is now fully compliant in components 2A, 5A and 5B and an assumed practice D3 related to participation in College Scorecard.

**MORE: See Page 3**

# Accreditation

Continued from Page 2

Due to the COVID-19 pandemic, the focused site visit was conducted with two of three reviewers participating remotely this past Sept. 10-11. The reviewers' ensuing report was then submitted to the HLC Board of Trustees for consideration.

## The HLC's review

The HLC wrote: The institution now meets Criterion Two, Core Component 2.A, "the institution operates with integrity in its financial, academic, personnel, and auxiliary functions; it establishes and follows policies and processes for fair and ethical behavior on the part of its governing board, administration, faculty, and staff," for the following reasons:

- Board integrity is demonstrated in new policies that prevent nepotism and support ethical behavior.

- The board is receiving appropriate levels of training, which include training on the Open Meetings Act, budgeting, governance, ethical behavior, and fiduciary responsibility.

- Board interaction with staff and faculty is guided through the institution's president. Communication between the president and the chair of the board takes the form of weekly written updates.

- Board agenda items are established through meetings with the president and board chair.

The institution now meets, but with concerns, Criterion Five, Core Component 5.A, "the institution's resource base supports its current educational programs and its plans for maintaining and strengthening their quality in the future for the following reasons:

- The institution is economically dependent on financial resources flowing from federal and state appropriations and local property taxes. The current economic model reflects the following primary revenue streams: state appropriations funding and local property taxes, which comprise over 80 percent of the total operating revenue. In comparison, tuition and fees account for less than 10 percent of the operating revenues. Both the state funding and tuition revenue are sensitive to enrollment, which has significantly declined, resulting in operating deficits and limited availability of resources. The institution also stated that the population in its service area is shrinking, which could negatively affect the level of resources generated by operations.

- Enrollment reports showed a drop from 777 full-time student equivalents in the fiscal year 2014-15 to 565 full-time student equivalents in the fiscal year 2018-19. Furthermore, the institution reported that the headcount for fall 2020 equaled 712 students, down 31.7 percent from the fall 2019 headcount of 1,042 students. Since student enrollment has been declining, the fallout indicates there is more capacity than student

demand. Although the results were not available, the administration believes a portion of the tuition revenue loss may be offset by the newly developed workforce training programs, dual credit offerings, and implementation of eight-week sessions.

- Although enrollment is expected to remain flat, the administration recommended, and the board approved, a 6 percent per year tuition rate increase, including in-district and out-of-district and -state for fiscal years 2021 through 2024. Additionally, the board approved revising the fee structure for credit and non-credit students. The five-year forecast model indicates an infusion of \$147,000 from the increase in tuition and fees starting in fiscal year 2021. The action may be justified but is counter to the deflationary tuition market that postsecondary education is experiencing.

- The Long-Term Sustainability Planning Guide focuses on three principles: institutional plans, program review, and annual department plans. The Planning Guide mentions the establishment of key financial indicators that will assist in guiding the institution to financial solvency, which includes financial indicators, scoreboard indicators, and academic program efficiency reviews. The Planning Guide also discloses retention and graduation rates for fiscal years 2014-15 through fiscal years 2018-19 and indicates "the need to review and

**MORE: See Page 4**

## College Scorecard:

The U.S. Department of Education's College Scorecard has the most reliable data on college costs, graduation and post-college earnings. Visit [collegescorecard.ed.gov](https://collegescorecard.ed.gov)

# Accreditation

## Continued from Page 3

revise strategies thereof." However, no situational assessments or improvement strategies are offered to improve student outcomes. The Planning Guide's forecast based on the performance indicators used projected operating deficits through fiscal year 2022-23.

- Luna's Institutional Focused Visit Report stated that the "Board of Trustees has been tasked with adopting a series of financial policies that provide the guiding framework for the college's financial practices and desired financial outcomes." However, HLC's board did not find specific evidence that would support recommended best practices.

The institution undergoes an annual financial audit, which includes a review of the system of internal controls. The fiscal year 2019-20 annual audited financial report received an unmodified opinion from the auditors indicating a fair presentation of the financial statements in all material respects.

- The fiscal year 2019-20 audited financial report reported operating revenue of \$4.0 million, operating expenses of \$18.2 million, and non-operating revenue of \$10.0 million for a financial imbalance or change in net position of \$4.2 million.

Additionally, the institution's total net position of \$1.0 million is separated as net investment in capital assets of \$22.5 million and unrestricted equity of minus \$21.5 million, resulting from several years of deficit results. The operations provided a net increase in cash and cash equivalents of \$375,000. This was primarily the result of noncapital financing activities (state

appropriations and local property taxes) of \$9.8 million, exceeding the amount of net cash used by the operations of \$9.2 million.

- Luna has deferred specific building maintenance and related systems upkeep from a normal operating budget cycle due to the lack of funds. The Facilities Master Plan for the fiscal year 2019-20 reported that deferred maintenance was estimated to be \$10.2 million.

- The institution is well aware of the trends and challenges it faces. The relatively new administration has aggressively assessed the institution's present situation and is applying an integrated approach to develop several new or revised plans for a sustainable economic model that will balance the operations for financial viability. Also, the board's oversight is apparent. However, the demonstration of progress will be time-sensitive. The institution is in the midst of various planning and implementation stages, and it is too early to assess the results. During the transformation, Luna will also need to bridge the resource gap, which is the difference between its current financial position and a prosperous future (also see comments under Criterion 5, Core Component 5.C.).

The institution now meets Criterion Five, Core Component 5.B, "the institution's governance and administrative structures promote effective leadership and support collaborative processes that enable the institution to fulfill its mission," for the following reasons:

- The institution's establishment of policies and procedures provides a sustainable framework for assuring shared governance. Specifically, Board Policy 1520 as amended clarifies the relationship between the

Board of Trustees and the institution's shared governance structure. It also creates clear expectations of the roles of the Board of Trustees, the institution's president, the faculty and staff shared governance structure, and other institutional constituents.

- During a six-week time period, twenty different institutional issues, practices, procedures, and policies were documented and discussed, resulting in what is expected to be a highly productive shared governance system.

The institution now meets the Federal Compliance Requirement related to Review of Student Outcome Data for the following reasons:

- While acknowledging that its use of the U.S. Department of Education College Scorecard is still in its infancy, Luna has oriented faculty and staff to the Scorecard and its uses and the Scorecard is readily available on the Luna website.

- Luna uses the information contained in the Scorecard in various ways, including, but not limited to, affordability comparisons within New Mexico and competitive tuition analyses.

- Academic departments are beginning to use Scorecard information in annual and strategic budgeting exercises. Specifically, Luna now requires that all academic departments submit Scorecard information not only when developing budgets but also in Academic Department Annual Reports.

- The Institution has also made Scorecard information readily available to students to assist in

**MORE: See Page 5**

# Accreditation

Continued from Page 4

making comparisons among Luna and other institutions.

- Luna is participating more fully in the USDE College Scorecard program and is meeting its obligations.

The HLC Board is requiring that the institution host a focused visit regarding Core Components 5.A, 5.C, and 5.D3 no later than February 2022, with specific focus on the following:

- With regard to finances: The institution must demonstrate its use

of evidence to verify that the new economic model is leading toward long-term financial sustainability. Evidence is needed of robust assessments of progress that will allow for continuous improvement and lead to reinvestment in student success, new and existing program development, technology, marketing, and employee professional development.

- With regard to planning: The institution must demonstrate sustained attention to planning and the integration of its planning activities in support of achieving its outcomes, particularly in support of its enrollment and financial sustainability goals.

- With regard to institutional effectiveness: The institution must demonstrate that its use of evidence to inform performance has remained consistent and is maturing to support its planning activities and financial performance.

### Moving forward

Luna has been placed on the HLC Standard Pathway, with its next comprehensive evaluation for reaffirmation of accreditation in 2024-25.

“We want to thank the Higher Learning Commission for helping make us a better college,” Patterson

**MORE: See Page 6**



## TEAS nursing school entrance exam Fall 2020 test dates

**Scheduling for the following dates  
is taking place now.**

<b>Tuesday, Nov. 10</b>	<b>8:30 a.m.</b>
<b>Friday, Nov. 13</b>	<b>1:30 p.m.</b>
<b>Thursday, Dec. 3</b>	<b>1:30 p.m.</b>
<b>Friday, Dec. 4</b>	<b>8:30 a.m.</b>

Contact: Yvonne Piña  
505-454-2525  
ypina@luna.edu

**Students, you can also schedule a date and time to test one-on-one with Yvonne from Dec. 7 through Dec. 18. You will be permitted to select your time and date depending on availability.**

You have up to three attempts per academic year to pass the exam; the fee for each attempt will be \$70.

# Accreditation

Continued from Page 5

said. “Because of the HLC and the standards established, our college has a better foundation. This process will have the net result of making us stronger as we pursue our No. 1 goal – continuing to create opportunities

for our students and communities.”

The Higher Learning Commission accredits approximately 1,000 colleges and universities that have a home base in one of 19 states that stretch from West Virginia to Arizona. HLC is a private, non-profit accrediting agency. It is recognized by the U.S. Department of Education and the Council for Higher Education

Accreditation

Luna has been accredited by the HLC since 1982. The college offers approximately three dozen certificate and associate degree programs in seven departments – Allied Health Sciences, Business, Career and Technical Education, Early Childhood Education, Humanities, Nursing and STEM.



# Luna

# Light

Keep up to date on all the latest happenings involving Luna Community College and its people. Find us online at [www.luna.edu](http://www.luna.edu).



# Know the Difference: Flu vs. COVID-19

Get a flu shot now!  
Find a clinic:  
[www.immunizenm.org](http://www.immunizenm.org)

## Flu Symptoms

- **Fever\*** or chills
- **Cough**
- **Sore throat**
- **Runny or stuffy nose**
- **Muscle or body aches**
- **Headache**
- **Fatigue (tiredness)**
- **Vomiting and diarrhea** (more common in children than adults)

\*Not everyone with flu will have a fever.

## COVID-19 Symptoms

- **Fever or chills**
- **Cough**
- **Sore throat**
- **Runny or stuffy nose**
- **Muscle or body aches**
- **Headache**
- **Fatigue (tiredness)**
- **Vomiting**
- **Diarrhea**
- **Shortness of breath or difficulty breathing**
- **New loss of taste or smell**

\*Many people with COVID-19 do not experience symptoms

NEW MEXICO DEPARTMENT OF HEALTH  
**COVID-19 HOTLINE**



**1-855-600-3453**

**Available 24/7**

NEW MEXICO  
DEPARTMENT OF  
**HEALTH**

# Why choose Luna?

Luna Community College takes pride in delivering quality educational programs in multiple disciplines, preparing students for

the next step in higher educational journeys and career pathways. We asked each of Luna's seven academic and vocational department directors

for their insights on what their programs have to offer students. The following are their words.



## Allied HEALTH Sciences

Allied health science professionals are an essential component of our health care systems. Graduates of allied health programs provide support to health care administration, and play a vital role in therapeutic and technological fields of health. A large portion of our country's health care workforce is comprised of allied health professionals, including: dental assistants, nursing assistants, emergency medical technicians, community health workers, and medical billing and coding workers. These allied health professions support, aid and increase the efficiency of the dentists, nurses, doctors and other primary health care specialists.

The Luna Community College Department of Allied Health Sciences prepares its students to excel in the workforce through theoretical learning and practical laboratory experience. The education obtained through the certificates and degree program enables students to pass accreditation exams, secure employment, and/or pursue other degrees beyond the offered certificates and associate degree.

Luna Community College's Allied Health certificate and degree programs provide a foundation of strength and breadth in health care to prepare individuals to face modern health related ethical and legal issues, and to promote healthcare and disease prevention. The programs within the Allied Health Sciences Department at Luna Community College are also designed to prepare graduates with hands-on skills, allowing them to advance in any health-related profession; meet societal and healthcare delivery demands; and work in a variety of settings with diverse patients, families and communities.

— Breanna Gould, Allied Health Sciences



# Why choose Luna?

Are you interested in one of the many careers available in the world of business? Luna Community College offers a program that will introduce you to the possibilities — and prepare you for a bachelor's degree and beyond!

Our associate degree program in business administration is a 60-credit hour program which offers such courses as entrepreneurship, finance, marketing, ethics, e-commerce. Some of the electives for this program include Computer Fundamentals, QuickBooks, Microsoft Excel, Microsoft Access and more.

The program is 100 percent online, which means you could complete this program without having to come to a traditional classroom throughout the entire course of study. Our instructors have doctorate or master's degrees in business. And our staff members combine education background in business and experience serving students.

Luna Community College School of Business is accredited by the Accreditation Council of Business Schools and Programs (ACBSP). The school also is a member of the New Mexico Business Consortium, which has 13 different courses being articulated among 25 different colleges and universities.

The Luna Community College associate degree program in Business Administration is recognized as No. 2 in the nation and No. 1 in affordability, according to Intelligent.com.

We'd love to have you join our program!

— Lita Bernal, School of Business



## School of BUSINESS

*The Luna Light* is a publication of the Luna Community College Office of Public Relations. To submit story ideas or items for consideration, please e-mail Jesse Gallegos, [jgallegos@luna.edu](mailto:jgallegos@luna.edu), and Dave Kavanaugh, [dkavanaugh@luna.edu](mailto:dkavanaugh@luna.edu).

# Why choose Luna?

The staff and instructors of Luna's Education Department and Preschool are highly qualified educators with a mass of experience in education at all levels.

The department is small enough that its students receive individual attention.

The program is articulated with and transferable to every college and university ECED program in the state of New Mexico.

Students receive hands-on experience in the program's CYFD licensed 5 Star FOCUS lab school preschool.

Programs offered are Early Childhood Teacher Education, which covers birth through third grade (A.A. and certificate); Teacher Education which covers kindergarten through eighth grade (A.A.).

Scholarships are available to students who have successfully completed the prior semester before the award is given.

## **Preschool and School-Aged Support Classroom**

The preschool is currently serving 10 preschool children but have consistently had five to seven in attendance daily.

We are currently serving 15 school-aged students but consistently have had three to nine in attendance daily. This is a temporary service due to the COVID-19 crisis.

Child care assistance is available through New Mexico Human Services Department for families who qualify; all families are encouraged to apply.

## **Need and Support for Highly Qualified Early Childhood Teachers in N.M.**

New Mexico is leading the charge to support early childhood education teachers by standardizing the professional education requirements.

New Mexico is one of only a few states to have established a cabinet-level department specific to early childhood education and care in the New Mexico Early Childhood Education and Care Department, which encompasses CYFD, PED, HED and the Legislative Educational Finance Committee.

— **Brenda Ortega, Education**



## **Early Childhood & Teacher EDUCATION**

# Why choose Luna?

## Career & TECHNICAL Education

Whether you hear them called trades courses, vocational courses or career and technologies courses, the courses offered in the CTE Department at Luna Community College all lead to the same goal: A JOB! Some high school students have interests that are beyond traditional courses like reading, writing and arithmetic. Some adults decide that they don't want a "9 to 5" desk job. The certificate courses in CTE are foundational to adult education and are available for people who like to work with their hands and their heads. Let's be clear; today's certificate courses are not for dummies. Most involve using high-tech equipment.

The courses we offer now may not be the same courses we offer tomorrow. Once you become a life-long learner, you prepare yourself for the opportunities in a changing job-market. Some courses like Automotive Technology, Automotive Collision Repair, Barbering and Cosmetology, Building Technologies, Culinary Arts, and Welding prepare a student to go to work in a good-paying job almost anywhere. Add to these certificate programs the courses leading to an Associate of Applied Science degree, and you may be adding the skills you need to be your own boss and own your own business.

We are always looking for cutting-edge programs that could be beneficial to the individual student as well as the community. A certificate in Sustainable Resource Development could lead to a job in wind or solar energy. Soon we may adding courses related to electric cars. No one says an artist can't take a welding course and become a metal sculptor. And most cosmetologists consider themselves to be artists.

CTE students can begin learning their skills as Dual Credit students in high school and continue down new career pathways. Veterans can get certified in new skills that will take them on new adventures. Retirees can come back to school to develop the skills they have always wanted to become skilled hobbyists. But you have to be prepared to do the work and past the tests.

How a CTE program fits your life goals and personal interests is obviously up to you. Luna Community College has been placed in this community in this part of Northern New Mexico to serve the citizens here. But there may be certificate courses here that aren't available where you live. And sometimes one of these certificate courses might lead to a job opportunity away from here. We are here to help you clarify your life goals and to develop the skills necessary to turn those personal interests into something other than just dreams. We are here to discuss your needs and wants. And if we can't find a solution today, we will still be here tomorrow.

— Dr. John Thompson, Career & Technical Education



# Why choose Luna?

Are you an explorer at heart? Are you interested in a college education but not necessarily settled on one occupation or academic field?

Taking coursework in the Humanities Department and learning about a variety of fields may help you make that decision. A student in Humanities will spend his/her time satisfying core-curriculum requirements, obtaining an academic certification, earning an Associate of Arts degree, and exploring academic, vocational and personal goals that can be tailor-fit to the individual.

The LCC Department of Humanities' mission is to develop varied intellectual perspectives, advance technical skills, increase visual and written creativity, and promote social awareness through general education and career-focused courses and degrees.

Within the Humanities Department, you may opt to attain a certificate in general education or an associate degree in Liberal Arts. The Humanities Department also has exciting programs in Criminal Justice!

## **Liberal Arts Degree/Certificate:**

The Associate of Arts in Liberal Arts teaches effective oral and written communication concepts. Students will gain the ability to identify and define problems and tasks, the ability to think independently and creatively as well as the ability to organize ideas and create solutions. This program allows students to use the degree as either a stand-alone or transfer degree. Our A.A. degree provides students transferring to four-year schools with the curriculum needed for the first two years of a baccalaureate study and will offer the skills and attributes essential in a competitive job market.

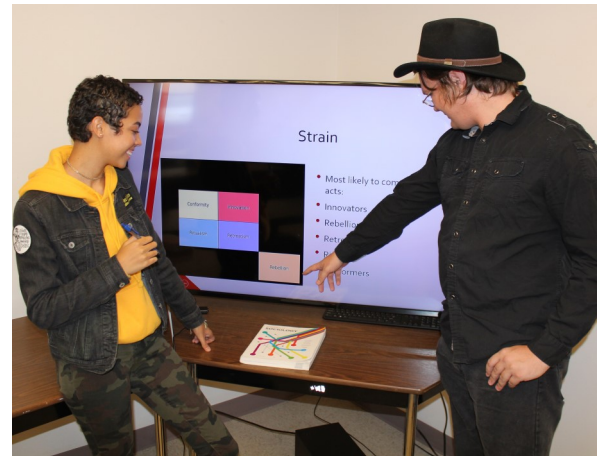
## **Criminal Justice Degree/Certificate:**

This program is an interdisciplinary course of study in the areas of law enforcement, substantive law, court structure and process, and corrections as integral components of the criminal justice system.

## **General Education Certificate Program:**

This flexible program is available for those who wish to tailor an associate degree to their own specific educational needs. The program will provide a variety of educational experiences and career opportunities as well as a foundation for both two- and four-year degree plans.

— Dr. Anita Roybal, Humanities



## HUMANITIES

# Why choose Luna?

**D**o you have a passion for helping others? Maybe a career in nursing, which is projected to have a high demand for professionals well into the next century, holds your dream job.

Luna Community College's associate of applied science degree in nursing meets state requirements, preparing you to take the NCLEX nursing licensure exam and become a registered nurse.

After achieving licensure, the program graduate will qualify for jobs as a registered nurse. This includes jobs in such settings as hospitals, clinics and doctors' offices, home health, hospice, public health, behavioral health, correctional facilities, long-term care facilities, rehabilitation centers, insurance assessments and review, schools and drug and alcohol treatment centers, to name a few.

Our faculty includes talented nurses with decades of real-world experience. They bring extensive knowledge of the content plus practical savvy from careers committed to patient care.

Our curriculum includes classroom, laboratory and supervised clinical instruction. The program culminates with a one-on-one practicum experience in real workforce settings.

Luna's nursing program offers a state-of-the-art simulation laboratory in which you can learn procedures and treatment techniques for adult, pediatric and infant patients. Build your skills and develop confidence before you begin clinical rotations. Luna has developed partnerships with a number of health care entities, enabling you to gain invaluable hands-on experience in various clinical settings.

Luna offers the common New Mexico Nursing Education Consortium curriculum, and the program is approved by the New Mexico Board of Nursing. Luna's associate of applied science in nursing program is accredited through the Accreditation Commission for Education in Nursing.

— Maxine Hughes, Nursing



## NURSING

# Why choose Luna?



## **STEM** **(Science, Technology, Engineering & Math)**

*Note: The Luna Light used many file photos in this issue.*

**S**TEM is the term used to group together the academic disciplines of Science, Technology, Engineering and Mathematics. The United States has been a global leader, for the large part, through the hard work and innovative work of scientists, engineers, and innovators. As our world continues to become increasingly complex, where success is measured and defined not only by what you know, but also by what you can do, it is more important than ever that students are equipped with the knowledge, skills and expertise to solve complex problems, gather and evaluate, and make sense of information. These are the skills that students in STEM learn.

Luna's STEM programs prepare students for technical positions in STEM fields and offers a direct pathway for advanced STEM degrees at other four-year institutions. STEM Department graduates have moved on to successfully complete four-year degrees at our states most prestigious universities, such as the University of New Mexico, New Mexico Institute of Mining Technology and New Mexico State University. Our STEM graduates have also gone on to work at Los Alamos and Sandia National Laboratories as well as other public and private entities. The education and technical preparation of Luna's STEM students is proven and points to the strength of our educational programs and to the quality of instruction afforded to students.

Luna's STEM Department and programs pride themselves on the rigor and pace at which students learn in their respective areas. With an emphasis in a strong Mathematics foundation all STEM programs provide for a breath of technical knowledge that is rare in today's educational arena. Our students leave LCC with the tools to be successful in either the continuation or their education or stepping into the world of research, industry or business. Luna's STEM graduates leave with the tools to ensure success in any endeavor. For more information about STEM programs of study, call 505-454-2500 and ask to speak to a STEM advisor or the STEM Department for more information.

— **Francisco Apodaca, STEM (Science, Technology, Engineering & Mathematics)**

# Meet your ACE tutors

Luna Community College Academic Center for Excellence tutors are available to help students with various classes and subjects.

Luna students may contact ACE coordinator Ray Varela at 505-454-5306 or rvarela@luna.edu to set up appointments or ask any questions

about ACE.

Here is a behind-the-scenes look at a couple of our ACE team members (second in a series):



## Luna Light PERSONALITY PROFILE

**ACE TUTOR:** Brittney Marie Mares  
**HOMETOWN:** Las Vegas, N.M.  
**SUBJECT(S):** Science and math  
**OTHER JOBS:** Full-time mommy and pre-med student  
**EDUCATION:** Robertson High School, Luna Community College, New Mexico Highlands



### What motivates you to tutor students?

Witnessing when a student grasps a concept that was initially a challenge. Tutors get rewarded by their students' achievements, and this motivates me to be there for my students and make my best effort to help them build their confidence as well as their knowledge.

**Whom do you admire the most and why?** My mom, because she has always pushed onward. Life has not always been fair for her, but the harder it gets, the more she fights back! I admire my mom because she is the strongest person I know and has never given up. She has instilled in me that anything is possible as long as you work hard enough to achieve it.

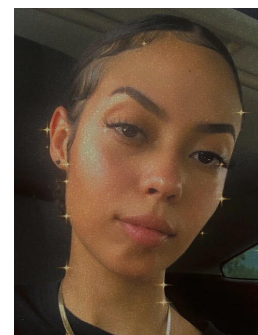
**What is something about you that would surprise most people?** I guess most people are surprised when they find out I'm vegan.

**FAVORITE MOVIE:** "Black Panther"  
**FAVORITE TV SHOW:** "Grey's Anatomy" (shocker)  
**FAVORITE FOOD:** Thin crust veggie pizza, no cheese, a fresh salad  
**FAVORITE SPORT:** Volleyball  
**FAVORITE SONG:** "My Way" by Elli Mai  
**FAVORITE MUSIC ARTIST:** Ariana Grande  
**FAVORITE THING ABOUT LUNA AND/OR VEGAS:** Its tight knit community. It's almost family-like. While attending Luna, I felt that all faculty and even students were rooting for everyone's success and always willing to lend a helping hand. The mixing of cultures and different age groups is also a refreshing experience.



## Luna Light PERSONALITY PROFILE

**ACE TUTOR:** Melanie Soto Ramos  
**HOMETOWN:** Miami, Florida  
**SUBJECT(S):** Humanities, STEM  
**OTHER JOBS:** Barista  
**EDUCATION:** North Miami Beach Senior High, Luna Community College



### What motivates you to tutor students?

I believe every student has the opportunity to better themselves, but it all starts with being able to ask for help. Every time a student comes to me for help once again, I know they have gained a little more confidence to be able to ask for that help. The confidence tutoring gives students is what motivates me most.

**Whom do you admire the most and why?** Assata Shakur, former member of the Black Liberation Army, is my role model. She is a strong Black woman who stood for a cause even when her quality of life and her life itself were threatened.

**What is something about you that would surprise most people?** I was born in the Dominican Republic but came to America at a very young age.

**FAVORITE MOVIE:** "The Outsiders"  
**FAVORITE FOOD:** Pasta  
**FAVORITE SPORT:** Soccer  
**FAVORITE SONG:** "Buttercup" by Jack Stauber  
**FAVORITE MUSIC ARTIST:** Megan Thee Stallion  
**FAVORITE THING ABOUT LUNA AND/OR VEGAS:** I love the sense of community in Las Vegas, N.M. It isn't common everywhere. Everyone watches out for their neighbors. It is a warm and welcoming environment.  
**HOBBY:** Spending time in nature with my dogs



**Students!**  
 Your ticket to many forms of federal student financial aid, the FAFSA is now available at [fafsa.gov](https://fafsa.gov). Fill it out ASAP to get as much financial aid as possible.

Join our team and help us serve our communities!

## Employment opportunities

Positions available at Luna Community College

### FULL-TIME

- Dual credit and transfer coordinator ... opened Nov. 16, 2020 (INTERNAL LISTING)
- Career services advisor ... opened Nov. 9, 2020 (INTERNAL LISTING)
- Chief financial officer ... opened Oct. 29, 2020
- Institutional Effectiveness and Research director ... opened July 28, 2020; re-posted Oct. 8, 2020

### TEMPORARY PART-TIME

- ACE tutors (multiple) ... opened Sept. 23, 2020

### ADJUNCT (per course)

- Career & Technical Education — automotive instructor, Springer ... opened Nov. 21, 2019
- Career & Technical Education — welding instructor, Santa Rosa ... opened Oct. 31, 2019
- Career & Technical Education — CDL instructor ... opened August 28, 2019
- Career & Technical Education — collision repair instructor ... opened June 6, 2018



Most recent postings listed first. All positions open until filled unless otherwise noted. For more information on each position, please log on to our website at <https://www.luna.edu/jobs>





# Luna Community College

## Las Vegas, NM

### Board of Trustees

### District 7 vacancy

Luna Community College is seeking individuals interested in filling the vacancy for the Board of Trustees in District 7, San Miguel County. To be considered for the board, an individual must be a qualified elector and a resident of District 7.

For further details regarding district maps, visit [www.luna.edu](http://www.luna.edu).

Individuals must submit a letter of interest and resume to:

Luna Community College  
Office of the Interim President  
366 Luna Drive  
Las Vegas, NM 87701

Packets may be mailed or hand-delivered to the Office of the Interim President. They must be received by Monday, Nov. 30, to be considered. The Board of Trustees holds the authority to fill the vacancy in District 7. Trustees are expected to review applicant packets at their December meeting and interview finalists shortly thereafter. The individual selected shall serve until the next LCC board election (November 2021), at which time candidates may file for election to serve the remainder of the unexpired term.

For more information about the college's current accreditation status, you may visit the [hlcommission.org](http://hlcommission.org) website.





# GET A FLU SHOT

[TOGETHERNM.ORG](http://TOGETHERNM.ORG)



## WHY SHOULD YOU GET THE FLU SHOT?

Flu can strike the healthiest of people. Getting your flu shot doesn't just help keep you and your loved ones healthy and safe - it reduces stress on our healthcare system.

## SHOULD EVERYONE GET A FLU SHOT?

Yes. If you're a New Mexican, you should get your flu shot this year - particularly if you are a member of one or more of the following groups: people age 65 and older, young children, especially those under 2 years old, American Indian and Alaska Natives, people with chronic health conditions such as asthma, diabetes, and heart disease, pregnant women and up to 2 weeks postpartum, and morbidly obese persons.

## WHEN SHOULD YOU GET A FLU SHOT?

As soon as you can. The flu season typically begins in October, and the flu shot takes about 2 weeks for antibodies to develop and provide protection from the virus. This is why it is essential to get a flu shot before community spread begins or before you catch the virus itself.

## WHERE CAN I GET MY FLU SHOT?

The New Mexico Department of Health and private providers throughout the state have the flu shot available for New Mexicans.

**FIND YOUR NEAREST PROVIDER AT  
[TOGETHERNM.ORG/FLU](http://TOGETHERNM.ORG/FLU)**

**Saturday, November 21st from 10am-1pm  
Memorial Middle School  
947 Old National Road Las Vegas, NM 87701**



## **Luna Community College Nursing Program**

**Thursday, December 3  
10:00AM to 2:00PM  
Abe Montoya Rec  
Center Gymnasium**

Call Laura Hill 505.246.1490 To Sign Up

**COVID-19 Antibody Testing Included!**

To learn about our programs or how we can help your transfusion service, call **877.258.4825** or visit us at **vitalant.org**

**vitalant.** 

**It's been a challenging time for all of us.**

At Luna Community College, we can certainly attest to that. But smooth seas don't make for skilled sailors. Sometimes you've got to go through tests to find out how tough you really are. Sometimes those tests make you realize what is truly important.

# STRONGER

Luna is proud to announce that the college is off probation and once again accredited free of sanctions by the Higher Learning Commission. Our resolve to serve our students and our communities is **stronger** than ever. And we are excited to help you pursue and achieve your dreams in 2021 and beyond. Whether you're seeking training to get into the workforce, working toward a higher academic degree, or simply wanting to broaden your horizons by learning something new, Luna is here for you. Build a **stronger** future; let's make it happen together.

**SPRING 2021 REGISTRATION NOW OPEN!**

**Classes start Jan. 19. Register through Jan. 26.**

**Visit [LUNA.edu](http://LUNA.edu) for details, or call 505-454-2500 or 1-800-588-7232.**

